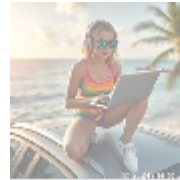
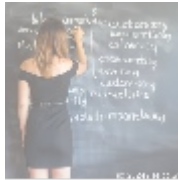




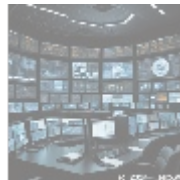
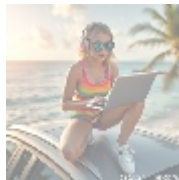
Unleashing Potential through Microsoft Azure



Understanding Microsoft Azure

Microsoft Azure is a leading cloud computing platform and service offered by Microsoft that allows organizations to build, manage, and deploy applications across a global network of data centers. Azure provides a comprehensive suite of services tailored for numerous business needs, including everything from hosting websites and applications to storage, networking, and analytics. Its versatility is evidenced by the wide array of tools and services it encompasses, such as computing power, data storage, and IoT capabilities, which enable companies to innovate and grow without the traditional constraints of on-premises infrastructure.

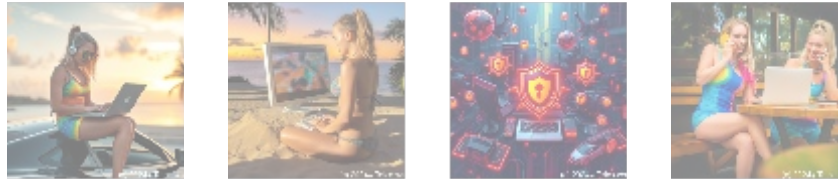
In the context of today's ever-evolving technological landscape, businesses must adapt to new digital realities. Azure facilitates this adaptation by providing the scalability necessary for organizations to grow their operations without the need for substantial upfront investment. Companies can capitalize on Azure's resources to experiment with new ideas, drive business agility, and respond dynamically to market changes. Moreover, Azure has made significant investments in its global network, ensuring that companies benefit from reduced latency and improved performance regardless of their location.



Economic Benefits of Microsoft Azure

From an economic standpoint, Microsoft Azure presents a wealth of advantages that can significantly improve the bottom line for organizations across various sectors. One of the most appealing factors is its cost efficiency. Transitioning to cloud computing eliminates the hefty capital expenditures typically associated with maintaining physical servers and IT infrastructure. With Azure's consumption-based pricing model, businesses pay only for the resources they actually use, allowing them to scale their operations up or down as needed. This flexibility is particularly vital for startups and SMEs that may have unpredictable or fluctuating resource demands.

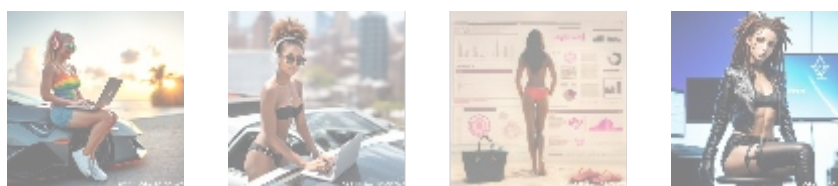
Moreover, businesses can harness Azures automation features, which reduce operational costs by streamlining processes. Routine tasks, such as server updates or backups, can be automated, freeing up IT staff to focus on more strategic initiatives. Azure also helps minimize downtime with its built-in redundancy and failover options, which are essential for maintaining continuous operations. These cost-saving measures enable organizations to invest more resources into innovation and product development, fostering growth and increasing profitability over time.



Political and Regulatory Considerations

When examining the political landscape surrounding cloud technologies, the adoption of platforms like Microsoft Azure is invariably influenced by government regulations regarding data management, privacy, and cybersecurity. Organizations must navigate compliance requirements that vary widely depending on their geographical location, industry, and the types of data they handle. Microsoft Azure recognizes these challenges and has heavily invested in obtaining crucial compliance certifications such as GDPR, HIPAA, and ISO 27001, making it easier for businesses to meet regulatory demands.

Moreover, Azures global data center footprint enables organizations to choose where their data is stored, thereby ensuring compliance with local data residency requirements. This is especially critical in sectors like healthcare and finance, where data privacy and protection are paramount. The platform also offers robust identity management and access control features, allowing organizations to implement strict security measures and ensure that only authorized personnel can access sensitive information. By addressing these political and regulatory concerns proactively, Azure positions itself as a trustworthy partner for businesses operating in highly regulated environments.



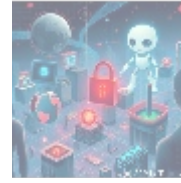
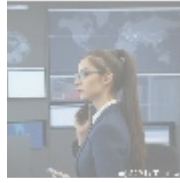
Understanding the Social Impact of Azure

The social implications of embracing cloud technologies, such as Microsoft Azure, are profound and multifaceted. One of the most notable benefits is the enhancement of remote work capabilities. With Azure, employees can access critical applications and data from anywhere in the world, facilitating a seamless remote working environment that not only boosts productivity but also encourages a better work-life balance. This flexibility in where employees work can lead to higher job satisfaction, employee retention, and increased productivity.

In addition to improving employee experiences, Microsoft Azure fosters collaboration through its integrated capabilities. Tools like Microsoft Teams, Power BI, and Azure DevOps promote communication and teamwork, irrespective of geographical barriers. This interconnected environment can lead to more innovative ideas, faster project execution, and improved overall performance. Furthermore, Azure's analytical capabilities empower organizations to collect and

- default
- [365 data centers account setup assistance](#)
- [365 data centers account setup assistance .pdf](#)
- [9fold account creation and assistance](#)
- [9fold account creation and assistance .pdf](#)
- [a comprehensive guide to go.golang](#)
- [a comprehensive guide to go.golang .pdf](#)
- [a comprehensive overview of acronis cloud features](#)
- [a comprehensive overview of acronis cloud features .pdf](#)
 - [a10 cloud account verification comprehensive setup and verification guide](#)
 - [a10 cloud account verification comprehensive setup and verification guide .pdf](#)
 - [a10 networks comprehensive overview and impact analysis](#)
 - [a10 networks comprehensive overview and impact analysis .pdf](#)
- [a2 hosting a comprehensive overview of web hosting solutions](#)
- [a2 hosting a comprehensive overview of web hosting solutions .pdf](#)
 - [a2 hosting account verification services our main company](#)
 - [a2 hosting account verification services our main company .pdf](#)
 - [a2 hosting performance evaluations understanding efficiency and metrics](#)
 - [a2 hosting performance evaluations understanding efficiency and metrics .pdf](#)
 - [access control](#)
 - [access control .pdf](#)
- [acronis account setup and approval services](#)
- [acronis account setup and approval services .pdf](#)
 - [acronis cloud security assessments ensuring robust cloud security](#)
 - [acronis cloud security assessments ensuring robust cloud security .pdf](#)
- [acronis migration assistance](#)

analyze vast amounts of data, enabling them to better understand customer needs and market trends, thus fostering a customer-centric approach to business.



The Importance of Security on Microsoft Azure

As cyber threats continue to evolve, security has become a top priority for businesses making the transition to cloud solutions. Microsoft Azure addresses these concerns by offering a robust range of security features designed to protect sensitive data against breaches and unauthorized access. The platform includes advanced threat detection technologies that utilize machine learning algorithms to identify and mitigate vulnerabilities in real-time. Azure also employs encryption at both rest and in transit, ensuring that data is secure regardless of its state.

Furthermore, Azures compliance and governance tools help organizations manage their security policies effectively. Routine security audits and assessments are crucial for maintaining stringent adherence to industry regulations. Businesses can leverage Azure Security Center for a centralized view of their security posture, which allows for proactive management of security risks. The continuous investment Azure makes in security infrastructure helps organizations fortify their defenses and reinforces trust among clients and stakeholders.

- Comprehensive threat protection against malware, ransomware, phishing, and other forms of cyber attacks, utilizing advanced AI technologies.
- Integration of identity and access management systems, such as Azure Active Directory, to enforce strict access controls based on user roles.
- Routine security audits and compliance assessments to remain aligned with evolving global standards and regulations, building customer trust.

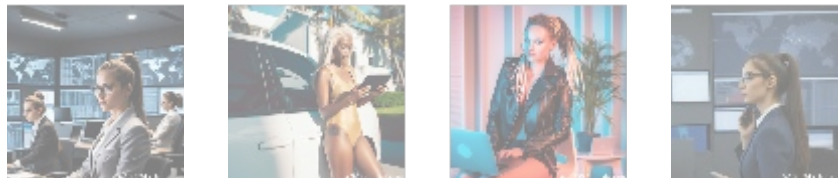


Your Business Digital Transformation Starts Here

As industries pivot towards digital solutions, leveraging Microsoft Azure can significantly enhance operational effectiveness and growth potential. The platform offers capabilities in artificial intelligence, machine learning, and big data analytics, which empower organizations to turn data into actionable insights. By harnessing these advanced technologies, businesses can enhance not just operational efficiencies, but also customer engagement and service delivery capabilities. For instance, predictive analytics can help businesses anticipate customer needs, enabling proactive service and fostering loyalty.

Furthermore, Azures suite of tools allows for the integration of Internet of Things (IoT) capabilities, facilitating the creation of smart applications that can gather and respond to real-time data. This interconnectedness enables businesses to optimize their operations, including supply chain management and customer relationship management. Companies can innovate their existing processes, attract new customers, and significantly enhance their products and services by adopting Azures comprehensive toolset, making them more competitive in the digital

landscape.



Conclusion: The Case for Microsoft Azure

In conclusion, Microsoft Azure is more than just a cloud service; it is a transformative platform poised to empower modern businesses to excel in a competitive marketplace. By providing cost-effective, scalable, and security-rich solutions, Azure addresses every facet of business operations, from efficient infrastructure management to advanced analytical tools. The platform's relentless advancement ensures that organizations can take advantage of the latest technological innovations while minimizing the burden of substantial capital investments.

In a digital age where adaptability and innovation are key to sustainable growth, Azure stands as a pivotal resource for organizations seeking to drive growth, enhance stakeholder value, and maintain their leadership position in rapidly changing industries. Embracing Microsoft Azure is not merely a technological upgrade; it is a strategic move toward future-proofing your organization against upcoming market changes and leveraging opportunities for expansion and efficiency.

Discover the Benefits of Microsoft Azure Today

If you want to delve deeper into how Microsoft Azure can catalyze your organizations transformation, do not hesitate to reach out to us at www.telco.ws. You can contact us via email, phone, or through our online form for personalized support. If you're ready to make an investment in your cloud journey, the price for our comprehensive Azure integration service is \$899. Please proceed to our [Checkout Gateway](#) and follow the provided payment instructions. After completing your transaction, please get in touch with us using your payment receipt and details to arrange your Azure transition service. We sincerely appreciate your interest in partnering with us for your digital transformation journey.

© 2025+ Telco.Ws. All rights reserved.

