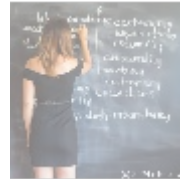
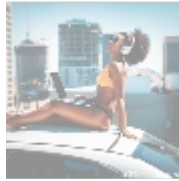




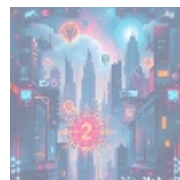
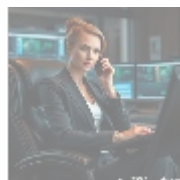
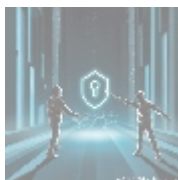
## Continuous Deployment Setup: Configuring CI/CD Pipelines with Netlify for Web Applications



### Understanding Continuous Deployment

Continuous Deployment (CD) is an advanced software development technique that automates the process of deploying applications to production environments. By integrating this approach with Continuous Integration (CI), development teams can ensure that every code change made by team members is automatically tested and integrated into the main codebase. This not only accelerates the release of new features but also enhances the overall quality of the software.

In today's fast-paced digital landscape, where user expectations are continuously evolving, adopting Continuous Deployment can be a game-changer for organizations. It enables teams to release updates and enhancements with remarkable speed, thereby improving customer responsiveness and satisfaction. With the ability to address issues and incorporate feedback almost in real-time, businesses can maintain a competitive edge in their respective markets. By reducing the time it takes to deliver new features or fixes, Continuous Deployment fosters innovation and customer engagement. In this context, understanding and effectively implementing CI/CD pipelines is crucial for organizations aiming for agility and excellence in digital product delivery.



### Various Perspectives on Continuous Deployment

When analyzing Continuous Deployment and CI/CD pipelines, it is crucial to examine multiple viewpoints that shape their implementation and impact:

#### **Economic Perspective:**

From an economic standpoint, Continuous Deployment offers significant benefits to organizations. The immediate economic advantages include reduced costs associated with manual deployment processes and shorter time-to-market, which can lead to increased revenue streams. By automating repetitive tasks, businesses

can minimize labor costs and reallocate resources towards innovation and growth. Furthermore, teams can maintain a consistent pipeline of updates that improve user experience and satisfaction, ultimately translating into customer loyalty and retention.

Moreover, companies implementing CI/CD often experience a lower Total Cost of Ownership (TCO) for software development, as automation reduces the resources necessary for manual deployments. The rapid release cycles not only facilitate faster monetization of features but also improve customer retention through frequent updates that enhance user experience. Organizations can track performance analytics to identify which features yield the highest return on investment, fine-tuning product offerings based on user feedback and data-driven insights. Businesses must carefully consider the initial investment in tools and training required for successful implementation, balancing immediate costs against long-term savings and benefits. This economic analysis is critical in ensuring that investment in CI/CD yields expected returns in efficiency and agility.

### Technological Perspective:

Technologically, CI/CD pipelines are built upon modern tools and methodologies, including version control systems (such as Git), containerization technologies (like Docker), and cloud platforms (like Netlify). These technologies work together to enable developers to automate testing, integration, and deployment processes.

By leveraging such tools, organizations can create robust, scalable, and easily maintainable applications. The automated testing integrated into CI/CD not only improves software quality but also reduces the time spent on debugging and quality assurance, pushing quality assurance earlier in the development cycle. With tools like static code analysis and automated testing suites, teams now have the capability to catch issues sooner, leading to higher quality code being deployed with confidence.

In addition, the cloud infrastructure provided by platforms like Netlify offers advanced features such as scalability, security, and serverless functions, which allow developers to focus on user functionality without worrying about underlying infrastructure management. The integration of security practices in the CI/CD pipeline also ensures that vulnerabilities are addressed in real-time, safeguarding the application against potential threats.

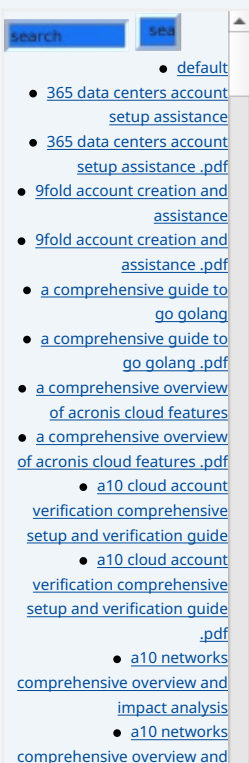
### Legal Perspective:

Incorporating Continuous Deployment practices also requires adherence to various legal frameworks regarding data privacy, software licensing, and intellectual property. As organizations deploy software more frequently, they must comply with regulations like GDPR and CCPA, which govern how user data is handled and protected. Ensuring compliance mitigates risks associated with potential legal actions and fosters trust among users.

Additionally, understanding the implications of open-source components used within the deployment process is crucial. Organizations often need to maintain licenses and ensure compliance with open-source software licenses, which may have distinct obligations attached to them. By implementing CI/CD while ensuring legal compliance, organizations safeguard their reputation and mitigate risks of data breaches or non-compliance penalties.

### Social Perspective:

From a social standpoint, Continuous Deployment fosters an environment of collaboration and transparency among development and operations teams. Adoption of CI/CD practices encourages open communication and teamwork,



breaking down silos that traditionally exist within organizations. This cultural shift can lead to enhanced job satisfaction and team morale, as employees can see the positive impact of their work more quickly and directly.

Moreover, by enabling more frequent releases, organizations can foster a culture of experimentation where teams feel empowered to innovate and iterate based on user feedback. This connection to users creates a deeper sense of purpose for team members, as they work on projects that directly affect their user base. The impact of these social changes can extend beyond the workplace, contributing to a broader tech community that values collaboration and continuous improvement.

### Historical Perspective:

The rise of Agile methodologies and DevOps practices over the past two decades provides a crucial context for understanding the emergence and necessity of Continuous Deployment. The transition from traditional waterfall models to Agile frameworks requires innovations in deployment strategies, paving the way for CI/CD's growing prominence in software development. Historical success stories from organizations that have swiftly transitioned to CI/CD practices underscore its effectiveness in meeting evolving customer demands.

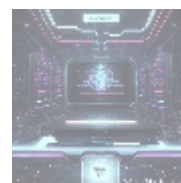
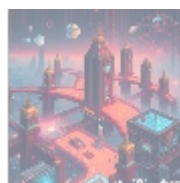
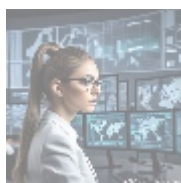
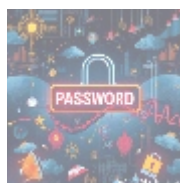
For example, companies in the tech sphere like Netflix and Amazon have set benchmarks for Continuous Deployment in the software industry by showcasing their ability to deploy thousands of updates per day. This historical paradigm shift has influenced newer companies to adopt the same practices, reshaping expectations across sectors. By analyzing past trends, organizations can identify best practices and potential pitfalls that can inform their CI/CD strategies moving forward.

### Sociological Perspective:

On a broader sociological level, Continuous Deployment reflects the growing significance of user-centric design and experience in software development. This emphasis on frequent collaboration with end-users results in products that are more aligned with customer needs, showcasing how social factors can influence technological advancements. Organizations are increasingly prioritizing user research and iterative feedback loops in the development cycle, fostering a more engaged user community that shapes ongoing product enhancements.

### Developmental Perspective:

Furthermore, the implementation of Continuous Deployment has positive implications for economic and social development. Companies that adopt these practices consistently become more competitive within global markets, driving job creation and enhancing overall societal progress through innovation. By continuously improving products and services, organizations can not only increase profitability but also contribute to a thriving economy by creating job opportunities and stimulating local communities. The relationship between CI/CD adoption and sustainable economic growth highlights the importance of fostering scalable development practices in shaping future markets.



## Core Technical Aspects of Continuous Deployment with Netlify

- [a2 hosting a comprehensive overview of web hosting solutions .pdf](#)
- [a2 hosting a comprehensive overview of web hosting solutions .pdf](#)
  - [a2 hosting account verification services our main company](#)
  - [a2 hosting account verification services our main company .pdf](#)
  - [a2 hosting performance evaluations understanding efficiency and metrics](#)
  - [a2 hosting performance evaluations understanding efficiency and metrics .pdf](#)
    - [access control](#)
    - [access control .pdf](#)
- [acronis account setup and approval services](#)
- [acronis account setup and approval services .pdf](#)
  - [acronis cloud security assessments ensuring robust cloud security](#)
  - [acronis cloud security assessments ensuring robust cloud security .pdf](#)
- [acronis migration assistance moving to acronis backup solutions](#)
- [acronis migration assistance moving to acronis backup solutions .pdf](#)
  - [add on configuration assistance on heroku](#)
  - [add on configuration assistance on heroku .pdf](#)
  - [ai and machine learning service integration guiding businesses with tencent cloud](#)
  - [ai and machine learning service integration guiding businesses with tencent cloud .pdf](#)
  - [alibaba cloud account creation assistance](#)
  - [alibaba cloud account creation assistance .pdf](#)
  - [alibaba cloud account creation services](#)
  - [alibaba cloud account creation services .pdf](#)
    - [alibaba cloud revolutionizing e-commerce and business solutions](#)
    - [alibaba cloud revolutionizing e-commerce and business solutions .pdf](#)
    - [alibaba cloud security configurations best practices for secure deployments](#)
    - [alibaba cloud security configurations best practices for secure deployments .pdf](#)
  - [alibaba cloud training and certifications](#)
  - [alibaba cloud training and certifications .pdf](#)
  - [alibaba cloud transforming e-commerce through cloud computing](#)
  - [alibaba cloud transforming e-commerce through cloud computing .pdf](#)
  - [alternative programming languages their role and importance](#)

Netlify stands out as an exceptional platform for implementing Continuous Deployment, offering users an intuitive and robust suite of tools to manage CI/CD pipelines seamlessly. The platform's features simplify the deployment process, allowing developers to concentrate on building applications without the complexities often associated with deployment. By removing friction from the deployment process, Netlify enables teams to focus on innovation and customer satisfaction.

Setting up Continuous Deployment with Netlify typically involves several critical steps that ensure smooth operations:

- **Repository Integration:** Begin by connecting your repository from popular version control systems (like GitHub, GitLab, or Bitbucket) to Netlify. This integration enables automatic deployments every time code is pushed to the repository, ensuring that the production environment is always updated with the latest code changes.
- **Automated Builds:** Configure your build settings by specifying the build command and output directory. This allows Netlify to understand how to create your application, ensuring that it is ready to run. Automated builds use a series of scripts to compile your code, run tests, and package your application correctly.
- **Environment Variables:** Manage and utilize environment variables securely for different deployment stages. This practice enhances operational security, ensuring sensitive information remains confidential. Environment variables can include API keys, database connections, and other configuration settings that should not be hard-coded in your application.
- **Instant Rollbacks:** In the event of a deployment failure or unforeseen issues, Netlify provides instant rollback options, allowing users to revert to a previous version of their application effortlessly. This feature is invaluable for maintaining uptime and user satisfaction, as it allows organizations to address issues quickly and minimize disruptions.
- **Custom Domain Management:** Netlify simplifies the process of assigning, managing, and securing custom domains through its interface. Users can deploy multiple sites under the same account without extensive configuration. Additionally, SSL certificates for improved security can be generated automatically.
- **Serverless Functions:** Netlify also supports serverless functions, which allow developers to run backend code without managing infrastructure. This scalable option lets you add dynamic functionality like API integrations with minimal overhead, reducing the complexity of deploying full server environments for each task.

By taking advantage of these features, organizations can achieve greater efficiency in their deployment processes, reduce lead times, and foster enhanced collaboration among development teams. Projects such as e-commerce platforms, SAAS applications, and content-driven websites can significantly benefit from Netlify's Continuous Deployment capabilities, allowing them to implement timely updates and enhancements to improve user experience and engagement.

Many businesses have successfully harnessed Netlify's power to facilitate their CI/CD processes. For instance, a leading e-commerce platform leverages Netlify's tools to execute frequent deployments, enabling rapid responses to market trends and consumer demands, thereby maintaining a competitive advantage in the industry. By regularly deploying updates and improvements, these businesses enhance customer satisfaction and build trust among users.

Overall, leveraging Netlify's CI/CD capabilities allows businesses to innovate faster while maintaining high standards of quality and security throughout the

- [Legal Terms](#)
- [Main Site](#)

- Why buying here:

1. Outstanding Pros ready to help.
2. Pay Crypto for Fiat-only Brands.
3. Access Top Tools avoiding Sanctions.
4. You can buy in total privacy
5. We manage all legalities for you.

development workflow.



## Conclusion: The Future of Continuous Deployment

As technology continues to evolve at an unprecedented pace, the emphasis on Continuous Deployment is only expected to increase. Innovations in fields such as artificial intelligence and machine learning may revolutionize CI/CD processes, enabling even greater levels of automation and predictive insights that enhance deployment methodologies. These advancements can lead to reduced cycle times, advanced analytics for performance monitoring, and improved decision-making processes.

Organizations that embrace Continuous Deployment practices will likely excel in the rapidly shifting digital landscape, as they will be better positioned to respond to market demands and adapt to user feedback. Netlify offers a powerful platform for implementing these strategies, empowering developers and businesses to deliver high-quality applications with unmatched agility.

In summary, Continuous Deployment is more than just a technical process; it's a strategic necessity for businesses intent on thriving in the digital age. Organizations that harness the benefits of CI/CD will not only improve their operational efficiencies but also enhance their ability to engage with customers, ultimately driving success and growth. As the landscape of technology continues to evolve, those who adopt and refine Continuous Deployment practices today will find themselves at the forefront of innovation and excellence in the years to come.

### Elevate Your Deployment Strategy Today!

Interested in expanding your knowledge about how our services can enhance your CI/CD capabilities? Feel free to reach out to us at [www.telco.ws](http://www.telco.ws) using email, phone, or our online form to receive expert guidance tailored to your specific needs. If you're ready to implement Continuous Deployment, the price for our comprehensive service is just \$850. Please proceed to our [Checkout Gateway](#) and utilize our Payment Processor to pay this amount in favor of our company. Once you've made the payment, kindly contact us via email, phone, or our site with your payment receipt to arrange your Continuous Deployment service. We appreciate your interest and look forward to working with you!

© 2025+ [Our Main Site](#). All rights reserved.



