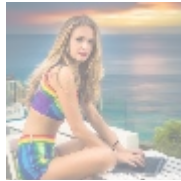
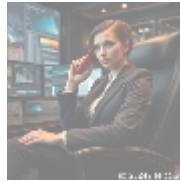




Azure Database Migration Service: A Comprehensive Overview



Understanding Database Migration to Azure

The **Azure Database Migration Service (ADMS)** is an essential instrument in the toolkit of businesses aiming to leverage the cloud for their operational databases. This service aims to facilitate the seamless transition of databases from on-premises or other cloud environments to the Microsoft Azure cloud infrastructure. In an era characterized by rapid technological changes and digital transformation, organizations are increasingly recognizing the importance of adopting cloud solutions that provide better scalability, enhanced security, and improved performance dynamics.

Utilizing ADMS helps organizations ensure minimal downtime and reduced risks during the migration process. For instance, a company planning to migrate a critical customer database can do so with strategies in place to zero in on potential downtimes. This is vital for maintaining business continuity and ensuring that customer interactions are not disrupted. As the pressure mounts to adopt cost-effective and agile solutions, the role of tools like ADMS becomes more significant than ever.

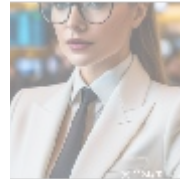
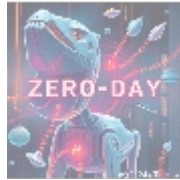
The economic implications of migrating to the cloud are profound. Organizations embracing this shift often report significant reductions in operational costs due to the elimination of the need for costly hardware and maintenance. Moreover, businesses transit from capital expenditures to operational expenditures, allowing them to adapt quickly to changing market conditions without the burden of substantial upfront investments. The trend toward cloud adaptation is not merely a technological advance but a fundamental shift that aligns with various business strategies focused on efficient resource allocation.

The political landscape plays a crucial role as well; regulatory frameworks governing data management are becoming increasingly stringent. Organizations are pressured to comply with privacy laws while managing sensitive information. In this context, the Azure ecosystem, backed by Microsoft's compliance apparatus, stands out as a safe harbor for data management.

On a social front, modern employees are placing a high demand on access and flexibility. The Azure platform supports global remote workforces, allowing employees to retrieve data and applications securely from anywhere, thereby

fostering an environment where productivity and innovation can thrive irrespective of geographical limitations. Environmentally, the strategic use of cloud infrastructure can lead to measurable reductions in an organizations carbon footprint aligning operational efficiency with sustainability efforts.

From a technological perspective, the features inherent in the Azure Database Migration Service such as automated data migration, comprehensive assessment tools, and monitoring capabilities are designed to streamline transition processes. These innovations ensure that migrations are efficient, secure, and tailored to business needs. The innovations don't just stop here; they also extend to database performance enhancement post-migration, ensuring organizations reap long-term benefits from their cloud investment.



The Multidimensional Impact of Azure Database Migration Service

As we delve deeper into the Azure Database Migration Service, its impact on the landscape of database management surfaces across multiple dimensions that deserve attention.

Economic Perspective

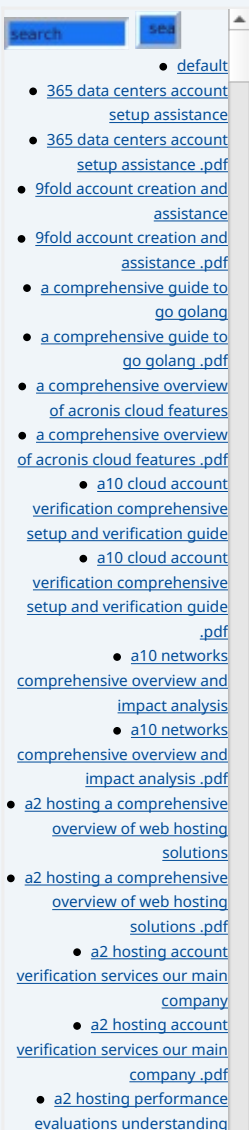
A closer examination of the economic ramifications reveals that migrating workloads to Azure via ADMS can drastically enhance the fiscal health of enterprises. Organizations can benefit from reduced costs associated with hardware procurement and maintenance, such as cooling systems, physical security, and electric power all costs that often spiral out of control in traditional data center environments. Furthermore, the flexible pricing models inherent in cloud provisions enable organizations to pay for what they use, fostering an adaptable financial structure.

Additionally, businesses often experience improved agility when they transition to cloud services, enabling a compelling workflow that adjusts to fluctuating market demands. For instance, a retailer may experience seasonal spikes in data usage cloud solutions provide the flexibility to upscale during peak shopping seasons without substantial investment in physical infrastructure that would see little use at other times.

Political Perspective

Working within the evolving landscape of compliance and legal frameworks, organizations are increasingly recognizing the necessity of utilizing cloud solutions that demonstrate adherence to compulsory data protection regulations. ADMS enables businesses to shift their data into environments compliant with laws such as GDPR or HIPAA, protecting them from serious legal repercussions associated with data mishandling.

Moreover, the global nature of many organizations means that data often transcends borders, necessitating a clear understanding of data sovereignty. In this regard, Azure can offer tools to ensure data locality and compliance, providing peace of mind to businesses operating in regulated sectors.



Social Perspective

Today's workforce is distinctly different from that of the past; it is mobile, connected, and demands flexibility in work arrangements. Azure Database Migration Service delivers on this front, as it supports secure access to necessary databases and applications from any location with internet connectivity. By promoting such access, organizations can cultivate an open and collaborative workplace, enhancing innovation and team dynamics.

Furthermore, the cultural shift towards a global workforce means that businesses must find means of connecting employees across geographical boundaries. The ADMS allows for the elimination of traditional barriers, establishing a foundation for efficient information exchange and project collaboration.

Environmental Perspective

Organizations today are increasingly accountable for their environmental impact, and migrating to Azure can significantly mitigate this by leveraging Microsoft's sustainability initiatives. Azure data centers are designed with energy efficiency in mind and operate on renewable energy whenever possible. By migrating to a cloud solution, companies can reduce their environmental footprint while still meeting their operational needs.

This is particularly relevant for customers seeking to align their technology strategies with corporate social responsibility goals. By participating in cloud solutions, organizations not only improve operational efficiency but also contribute positively to the broader goal of reducing carbon emissions, showcasing their commitment to sustainability.

Legal Perspective

The legal landscape surrounding data storage and management continuously evolves, with new regulations pushing organizations to adapt. Azure provides a plethora of governance and compliance features to manage data responsibly. Through ADMS, organizations gain insights into data residency requirements and governance needs, thus enabling them to implement robust data policies.

Understanding legal ramifications also extends to contractual obligations with customers and compliance with international data security standards. Given the current global dialogue on privacy and data protection, ADMS becomes an invaluable tool in navigating these waters.

Technological Perspective

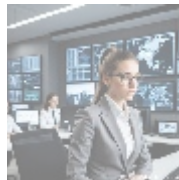
The technological advances embedded within the Azure Database Migration Service signal its next-gen capabilities. By harnessing automation and AI-assisted resources, organizations can minimize human errors and maximize efficiency during migrations. ADMS offers features such as flexible assessment and discovery tools for determining what data attributes need migration, built-in data validation to rectify issues proactively, and detailed activity logs to oversee migration processes comprehensively.

Moreover, Microsoft's emphasis on ongoing updates ensures organizations utilizing ADMS benefit from continuous improvements in performance and capabilities. The integration of machine learning also means that patterns can be analyzed, offering organizations insights and suggestions for optimizing their database management strategy well after the migration is complete.

- [efficiency and metrics](#)
- [a2 hosting performance evaluations understanding efficiency and metrics .pdf](#)
 - [access control](#)
 - [access control .pdf](#)
- [acronis account setup and approval services](#)
- [acronis account setup and approval services .pdf](#)
 - [acronis cloud security assessments ensuring robust cloud security](#)
 - [acronis cloud security assessments ensuring robust cloud security .pdf](#)
- [acronis migration assistance moving to acronis backup solutions](#)
- [acronis migration assistance moving to acronis backup solutions .pdf](#)
 - [add on configuration assistance on heroku](#)
 - [add on configuration assistance on heroku .pdf](#)
 - [ai and machine learning service integration guiding businesses with tencent cloud](#)
 - [ai and machine learning service integration guiding businesses with tencent cloud .pdf](#)
 - [alibaba cloud account creation assistance](#)
 - [alibaba cloud account creation assistance .pdf](#)
 - [alibaba cloud account creation services](#)
 - [alibaba cloud account creation services .pdf](#)
 - [alibaba cloud revolutionizing e commerce and business solutions](#)
 - [alibaba cloud revolutionizing e commerce and business solutions .pdf](#)
 - [alibaba cloud security configurations best practices for secure deployments](#)
 - [alibaba cloud security configurations best practices for secure deployments .pdf](#)
 - [alibaba cloud training and](#)

• Why buying here:

1. Outstanding Pros ready to help.
2. Pay Crypto for Fiat-only Brands.
3. Access Top Tools avoiding Sanctions.
4. You can buy in total privacy
5. We manage all legalities for you.



Empowering Businesses with Azure Database Migration Services

Benefits and Advantages of Using ADMS

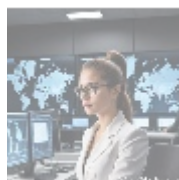
Organizations that engage with the Azure Database Migration Service experience a spectrum of benefits that extend beyond mere technical advancements:

- **Enhanced Scalability:** Organizations can easily and effectively scale their database infrastructures to keep pace with evolving workloads, swinging up capacity during busy seasons and scaling down during quieter periods without incurring unnecessary expenses.
- **Improved Performance:** Azure databases yield superior performance metrics, particularly in transactional environments, ensuring faster response times and a more intuitive user experience.
- **Automation:** The automation of various tasks within migration ensures projects are completed with minimal labor, allowing IT departments to focus their resources on innovation rather than routine maintenance.
- **Comprehensive Support:** Microsoft's commitment to support ensures that organizations transitioning to Azure can access vast resources, tutorials, and community advice to facilitate their migration processes.

Solving Core Problems

Migrating to the cloud introduces specific challenges; ADMS aims to tackle these through various solutions:

- **Efficient Data Transfer:** The Azure Data Box Service provides organizations with a physical means to transfer large datasets securely, circumventing concerns over internet bandwidth and potential latency issues.
- **Minimized Downtime:** Strategies such as Zero-Downtime Migration allow users to transition systems without causing disruptions to end users, preserving quality of service during critical transitions.
- **Compatibility Assurance:** Pre-migration assessments are integral, offering detailed insights into existing database configurations, which significantly reduces the risk of post-migration issues.



Final Thoughts on Azure Database Migration Services

In conclusion, the Azure Database Migration Service emerges not just as a tool for transferring data but as a transformative catalyst for enterprises looking to harness the full potential of cloud technology. By understanding the service's multi-faceted impact across economic, political, social, environmental, legal, and technological dimensions, organizations can align their migration strategies with

broader business goals. The potent combination of robust technology, increasing compliance needs, and growing market dynamics makes ADMS an essential component of any digital transformation initiative.

Interested in Seamless Database Migration?

If you're ready to optimize how your organization handles its databases and enjoy the considerable advantages of the Azure Database Migration Service, our offering starts at just ****\$850.**** Take the next step towards transformation by proceeding to our [Checkout Gateway](#) and completing your payment of ****\$850.**** Once your transaction is confirmed, contact us via email, phone, or our online form, providing your payment receipt along with your details to arrange for your Azure Database Migration Service. We appreciate your consideration of us for your cloud transformation journey!

© [2025+ Telco.Ws](#) . All rights reserved.

