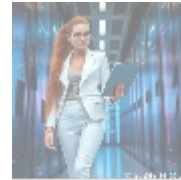




## 365 Data Centers Account Setup Assistance

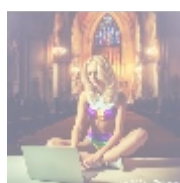


### Understanding 365 Data Centers and Account Setup

Setting up an account with 365 Data Centers represents a critical step in managing organizational data securely and efficiently. 365 Data Centers specializes in providing carrier-neutral data center solutions, which are essential for businesses across various industries such as finance, healthcare, technology, and many others. Their facilities are equipped with state-of-the-art infrastructure, which guarantees high levels of connectivity, power redundancy, disaster recovery capabilities, and robust cybersecurity measures. These elements are increasingly fundamental as organizations seek to protect sensitive data and ensure the reliability of their IT operations.

The complexity of the account setup process extends beyond merely entering details into an online form; it requires a comprehensive understanding of regulatory compliance, operational needs, and the unique functionalities provided by 365 Data Centers. A verified account serves as the foundational element for accessing the numerous services offered, including cloud storage, managed services, colocation, and integrated infrastructure solutions. This relationship ultimately enhances data reliability, scalability, and overall security posture, paving the way for organizations to innovate and grow without the constant worry of data loss or security breaches.

In an environment where data-driven decision-making is critical, establishing a verified account with 365 Data Centers enables organizations to take full advantage of high-quality data resources while maintaining strict adherence to compliance norms. This partnership proves invaluable, not only in safeguarding an organizations digital assets but also in maximizing their performance capabilities to stay competitive in the market.



### Key Considerations in Establishing Verified Accounts

When contemplating the establishment of a verified account with 365 Data

Centers, it is imperative to consider various factors that come into play. Each consideration highlights the importance of adopting a holistic view of the implications involved in this strategic decision. Here, we will explore multiple perspectives that contribute to creating a strong foundation for data management.

## Economic Considerations

From an economic perspective, the process of establishing a verified account with 365 Data Centers offers substantial financial advantages that can significantly impact an organization's budget and resource allocation. One key benefit is the predictable pricing model that allows organizations to outline their financial commitments with increased confidence. By investing in only the resources required and having the flexibility to scale up as needs evolve, companies can optimize their spending while minimizing waste.

Hosting data within a reliable data center cannot be understated. In today's digital landscape, the average cost of a data breach is a staggering amount, potentially exceeding millions of dollars, which is compounded by potential regulatory fines, legal fees, lost revenue, and reputational damage. By partnering with 365 Data Centers, organizations can drastically mitigate these risks, as the integration of top-tier security measures and services are a part of the initial agreement. This proactive approach to data security and reliability saves organizations money in the long run, all while supporting sustainable business growth.

Additionally, businesses can leverage the affordability of cloud resources, allowing for enhanced performance without the need to invest heavily in on-premises infrastructure. Improved resource management leads to increased efficiency, enabling organizations to reallocate funds thus enhancing innovation and operational agility.

## Political and Legal Dimensions

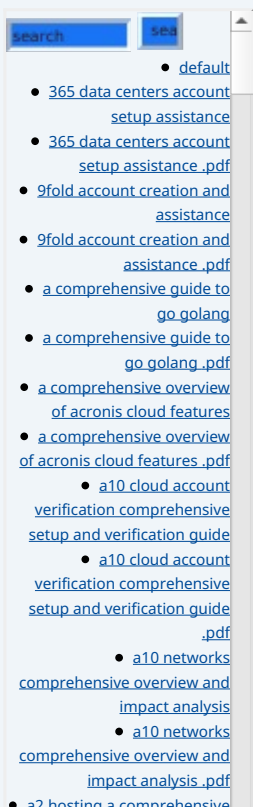
The political landscape surrounding data management is characterized by various policies and regulations that organizations must navigate diligently. Legal compliance is a paramount aspect of establishing a verified account with 365 Data Centers, as these facilities adhere to strict regulations regarding data protection and privacy, such as GDPR, HIPAA, and CCPA. These laws are designed to ensure that organizations handle personal and sensitive information responsibly and transparently.

Non-compliance with these regulations can result not only in substantial penalties but also in significant reputational damage that could hinder an organizations growth prospects. Thus, forging a partnership with a provider like 365 Data Centers simplifies compliance efforts by integrating surveillance and governance controls within the infrastructure. The credibility gained through verified data management practices enhances stakeholder trust and can significantly boost customer loyalty.

Furthermore, such strategic partnerships often bring additional value through best practices that foster accountability and transparency, thereby ensuring that the organization operates within a framework that emphasizes ethical data handling.

## Social and Cultural Factors

In an age where awareness of personal data security is soaring, it is imperative for companies to establish strong reputations centered on transparency and responsibility. Public expectations around data protection now significantly



influence consumer buying behavior and trust in brands. Establishing a verified account with 365 Data Centers signifies a commitment to responsible management of sensitive data, positioning organizations favorably in the eyes of tech-savvy consumers.

As businesses increasingly recognize the importance of corporate social responsibility, those that prioritize data management practices in line with social values have a distinct advantage in the marketplace. Working with a trusted data center provider not only fulfills operational needs but also allows organizations to align with societal expectations around privacy and security, enhancing their brand image and fostering customer loyalty.

Additionally, maintaining an open communication channel with the public regarding the security and compliance measures taken can solidify relationships with stakeholders and customers alike, building a community of trust and engagement.

## Technological Considerations

The transformation of business operations driven by rapidly advancing technologies has redefined how organizations interact with their data. 365 Data Centers leverage cutting-edge technologies, including cloud computing, artificial intelligence, and advanced security protocols, to provide clients with comprehensive data management solutions. The impact of cloud services, in particular, is revolutionary; they enable organizations to access, share, and analyze data from anywhere, increasing productivity and promoting agile working environments.

Transitioning to a more technology-driven management system necessitates that organizations partner strategically with providers who are steeped in technological expertise. Establishing a verified account means gaining access to optimized performance metrics, seamless systems integration, and proactive IT support that aligns with business strategies. These resources bolster operational resilience and allow clients to explore innovative opportunities, embracing digital transformation.

The integration of AI and machine learning also offers businesses invaluable insights into their data usage patterns and security vulnerabilities, paving the way for more informed decision-making and future-proofing against potential challenges.

## Environmental and Sustainability Perspective

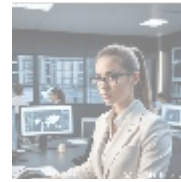
In today's corporate landscape, growing attention to environmental impact drives organizations towards sustainable practices. Many corporate stakeholders place increasing importance on environmental stewardship, pushing organizations to consider ecological footprints in all operational decisions. 365 Data Centers commitment to sustainability incorporates energy-efficient practices, as well as renewable energy utilization where possible, making it a prime choice for environmentally conscious enterprises.

Partnering with a data center emphasizing green operations not only provides organizations with tangible benefits such as energy cost savings but also strengthens their reputation as responsible corporate citizens. By working with facilities committed to sustainability, organizations can confidently showcase their dedication to environmental responsibility, which is increasingly becoming desirable to consumers and investors alike.

Incorporating green practices into a company's strategic messaging can differentiate a brand in a crowded marketplace, ultimately attracting clients who

- [a2 hosting a comprehensive overview of web hosting solutions.pdf](#)
- [a2 hosting account verification services our main company.pdf](#)
- [a2 hosting performance evaluations understanding efficiency and metrics.pdf](#)
- [access control.pdf](#)
- [acronis account setup and approval services.pdf](#)
- [acronis cloud security assessments ensuring robust cloud security.pdf](#)
- [acronis migration assistance moving to acronis backup solutions.pdf](#)
- [ai and machine learning service integration guiding businesses with tencent cloud.pdf](#)
- [alibaba cloud account creation assistance.pdf](#)
- [alibaba cloud account creation services.pdf](#)
- [alibaba cloud revolutionizing e-commerce and business solutions.pdf](#)
- [alibaba cloud security configurations best practices for secure deployments.pdf](#)
- [alibaba cloud training and certifications.pdf](#)
- [alibaba cloud transforming e-commerce through cloud computing.pdf](#)
- [alternative programming languages their role and](#)

share similar values regarding sustainability.



## The Importance of a Seamless Account Setup Process

A seamless account setup process is crucial for maximizing the value derived from partnership with 365 Data Centers. This stage involves comprehensive steps and thorough communication that ensure clients can efficiently access the required services while establishing a solid framework for their data operations.

The initial phase of account setup typically begins with detailed consultations conducted by dedicated account representatives. These consultations provide an opportunity for organizations to discuss their distinct requirements and business objectives in depth. Gathering insights about the specific usage and desired outcomes for the account helps tailor services for maximum operational benefit. Such personalized attention cultivates a strong basis for collaboration and ensures no details are overlooked during the account establishment.

After the consultation phase, clients proceed to submit essential documentation to verify their identity and operations. This documentation typically includes corporate registration documents, compliance frameworks, and security policies that illustrate how the organization intends to manage and protect client data. Such clarity regarding operational intent is critical to ensuring appropriate security measures from the outset.

Upon verification, clients can expect tailor-made setup workflows that align with their specific organizational needs. This may involve configuring essential settings around system access, firewall protections, and integrated user protocols that enhance data security. These tailored configurations ensure that sensitive information is safeguarded against unauthorized access and potentially malicious activities.

It is also imperative to establish robust backup systems during the account setup phase. Regular, systematic data backups can protect against significant disruptions that may arise due to hardware failure or breaches. Clients should draft explicit backup schedules, with intervals established for routinely verifying data integrity and successful recovery options.

Continuous engagement throughout the setup process promotes transparency and assures clients that their specific needs are prioritized. Regular communication from 365 Data Centers representatives can provide valuable answers to questions and address potential adjustments, fostering a collaborative atmosphere essential for successful partnerships.

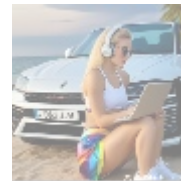
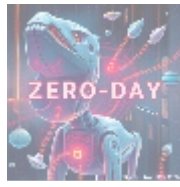
Ultimately, a proactive approach to account setup is integral to creating a robust partnership with 365 Data Centers. Organizations that embrace the nuances of this multifaceted process can more effectively position themselves within their data environments and realize the full advantages that accompany verified accounts. The robust foundation established will lead to confident utilization of the services offered, ensuring organizations fully harness the value of their data.

- [Legal Terms](#)

- [Main Site](#)

- Why buying here:

1. Outstanding Pros ready to help.
2. Pay Crypto for Fiat-only Brands.
3. Access Top Tools avoiding Sanctions.
4. You can buy in total privacy
5. We manage all legalities for you.



## Conclusion: Engaging with 365 Data Centers for Reliable Solutions

In conclusion, establishing a verified account with 365 Data Centers offers considerable benefits across various dimensions, including economic, legal, technological, social, and environmental considerations. As organizations continue to place heightened importance on the secure management of their data, the need for compliance with regulatory mandates and the availability of robust technological capabilities have become focal points for success in today's dynamic landscape.

Understanding how to navigate the account setup process effectively can significantly enhance an organization's capability to protect and manage its data resources strategically. By investing in quality data solutions from 365 Data Centers, businesses can optimize data security and operational efficiency, maintain compliance, and foster innovation while building a reputation as responsible and trustworthy stewards of sensitive information. This multifaceted approach to data management ensures that organizations can operate in accordance with evolving market conditions whilst prioritizing their growth and sustainability.

Interested in knowing more? Feel free to contact us at [www.telco.ws](http://www.telco.ws) using email, phone, or our online form. If you are ready to make a purchase, the price for our specialized 365 Data Centers Account Setup Assistance is \$850. Please proceed to our [Checkout Gateway](#) and utilize our Payment Processor to pay the indicated amount of \$850 in favor of our Company, following the instructions. After payment, we kindly ask you to provide your payment receipt and details via email, phone, or our website to arrange the setup service. Thank you for considering our services in enhancing your data security and management!

### Unlock the Benefits of Expert Account Setup Today

Elevate your data management capabilities by partnering with our dedicated team for the 365 Data Centers Account Setup Assistance. Act now to secure your vital data backed by industry experts!

© 2025+ [telco.ws](http://telco.ws). All rights reserved.

