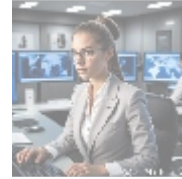
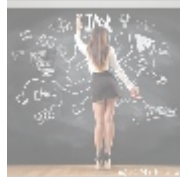




Website Migration Support: Ensuring a Seamless Transition with InterServer



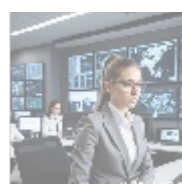
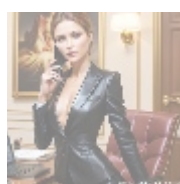
Understanding Website Migration Support

Website migration is a multifaceted process that involves transferring a website from one hosting environment to another. This transition can take various forms, ranging from changing web hosts, migrating to a new domain, or even transitioning from a traditional server setup to a more modern cloud infrastructure. Migration entails intricate planning, technical execution, and often a significant investment of time and resources.

In today's dynamic digital landscape, organizations are continuously adjusting their online presence to meet changing consumer expectations, technological advancements, and competitive pressures. As such, effective website migration support is not just about technical execution; it's about ensuring business continuity, maintaining user engagement, and optimizing operational effectiveness.

A successful migration requires thorough preparation. This includes auditing current website infrastructure, devising a comprehensive migration strategy, utilizing the right tools for data transfer, and planning for post-migration monitoring and troubleshooting. Depending on the complexity of the site, these steps might involve detailed documentation, stakeholder communication, and a robust risk management strategy to mitigate potential disruptions.

The risks associated with website migration can range from data loss, broken links, loss of SEO rankings, and extended downtime that can alienate customers. Therefore, businesses must prioritize choosing the right migration support that can guide them through this intricate process.



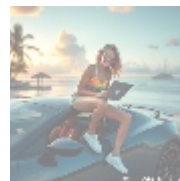
The Importance of Website Migration Support

Website migration support is crucial for several reasons, each of which

significantly impacts a business's online footprint and operational effectiveness:

- **Minimized Downtime:** One of the most critical aspects of any migration process is minimizing downtime. Prolonged downtime can lead to a substantial loss of revenue, particularly for e-commerce platforms that rely on uninterrupted user access. Moreover, users expect seamless access to services; downtime damages brand trust and reputation. Effective migration protocols are designed to reduce downtime to mere minutes if not seconds.
- **Data Integrity:** Maintaining the integrity of data during the transfer is paramount. Data integrity ensures that customer information, transaction histories, and content are kept intact without corruption. Careful planning for data backups, using reliable data transfer protocols, and validating data after migration is key to securing these assets.
- **SEO Consistency:** SEO performance is critical for attracting traffic to a website. An efficient migration maintains existing SEO settings such as meta tags, site structure, and URL mappings thus preventing the loss of hard-won search rankings. Proper implementation of redirects is essential to guide search engines and users to the new site location, ensuring continuity in search rankings and organic traffic post-migration.
- **Technical Expertise:** Having skilled migration personnel can make a significant difference in the success of a migration project. These experts are familiar with potential pitfalls and possess the technical knowledge to troubleshoot issues as they arise, ensuring a smoother transition. Their expertise extends beyond just data transfer; it involves understanding server configurations, potential compatibility issues, and post-migration optimizations.
- **Ongoing Support:** The migration process does not end once the site is live on the new server residual issues often appear. Continuous support during this phase is imperative to identify and fix any unforeseen problems, such as site speed issues, functionality discrepancies, or data inaccuracies. Quick response times bolster customer confidence and satisfaction.

A strategic approach to migration support ultimately results in enhanced site performance, better user experience, and the ability for businesses to adapt and scale in response to market demands, lessening frustrations for end-users and improving brand loyalty.



Economic Impact of Migration Support

The economic implications of website migration support can hardly be overstated. Organizations that fail to execute migrations effectively may experience significant financial repercussions. Lost revenue during extended downtime can have lasting effects, especially for businesses operating in competitive industries where customer loyalty can be tenuous.

Additionally, companies that opt for inadequate migration processes may encounter hidden costs, including:

- **Repairing Post-Migration Issues:** Inadequate preparation often leads to unexpected errors post-launch, requiring additional IT resources to rectify, which can strain budgets and disrupt workflows.
- **Declining Traffic:** SEO rankings tend to suffer if not properly managed

during migration, leading to reduced organic traffic and, consequently, decreased sales potential.

- **Customer Attrition:** Poor user experiences during downtime or post-migration issues can alienate customers, prompting them to seek services from competitors. Rebuilding trust and attracting former customers often incurs additional marketing costs.

Conversely, businesses that invest in comprehensive website migration support experience positive ramifications that extend beyond immediate financial outcomes. Greater site functionality, enhanced performance, and improved user satisfaction can lead to higher conversion rates, creating a more profitable operation in the long run. Enhanced performance upon successful migration ultimately serves a key role in solidifying market position and fostering growth.

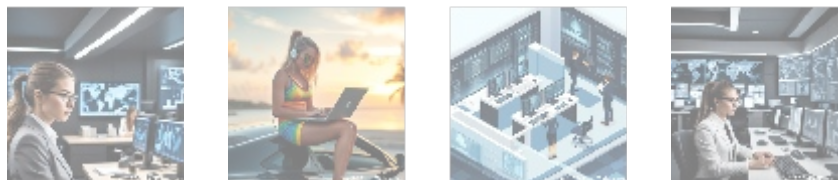


Political and Regulatory Considerations

In our modern digital environment, political and regulatory considerations have become increasingly relevant, especially concerning data privacy laws and compliance requirements. Depending on the jurisdiction, organizations may face stringent regulations governing how they collect, handle, and store user data. Examples include regulations such as the European GDPR, which governs data protection within the European Union, and the California Consumer Privacy Act (CCPA), which sets guidelines for protecting consumer data rights in California.

When undertaking a website migration, adhering to regulations is crucial. Organizations must review and ensure compliance with all applicable laws during the migration process, as violations can lead to steep fines and significant reputational damage. Migration support services should incorporate compliance expertise to facilitate this process effectively, guiding organizations in making sure all legal considerations are addressed.

Moreover, if an organization is transferring data across international borders, they must navigate an intricate landscape of data sovereignty laws that specify where data can be housed, processed, and stored. Engaging migration experts with a fundamental understanding of these complexities can ensure a smoother migration experience, eliminating legal risks associated with non-compliance.



Social and Cultural Perspectives

Sociocultural factors significantly influence user expectations and preferences when it comes to accessing websites. As technology evolves, so too do users' norms for interaction, engagement, and accessibility. To remain relevant, businesses must consciously align their migration strategies with the cultural nuances of their target audience, ensuring that their websites deliver the desired experiences.

For instance, as mobile browsing becomes increasingly prevalent, organizations

- default
- [365 data centers account setup assistance](#)
- [365 data centers account setup assistance .pdf](#)
- [9fold account creation and assistance](#)
- [9fold account creation and assistance .pdf](#)
- [a comprehensive guide to go.golang](#)
- [a comprehensive guide to go.golang .pdf](#)
- [a comprehensive overview of acronis cloud features](#)
- [a comprehensive overview of acronis cloud features .pdf](#)
 - [a10 cloud account verification comprehensive setup and verification guide](#)
 - [a10 cloud account verification comprehensive setup and verification guide .pdf](#)
 - [a10 networks comprehensive overview and impact analysis](#)
 - [a10 networks comprehensive overview and impact analysis .pdf](#)
- [a2 hosting a comprehensive overview of web hosting solutions](#)
- [a2 hosting a comprehensive overview of web hosting solutions .pdf](#)
 - [a2 hosting account verification services our main company](#)
 - [a2 hosting account verification services our main company .pdf](#)
 - [a2 hosting performance evaluations understanding efficiency and metrics](#)
 - [a2 hosting performance evaluations understanding efficiency and metrics .pdf](#)
 - [access control](#)
 - [access control .pdf](#)
- [acronis account setup and approval services](#)
- [acronis account setup and approval services .pdf](#)
 - [acronis cloud security assessments ensuring robust cloud security](#)
 - [acronis cloud security assessments ensuring robust cloud security .pdf](#)
- [acronis migration assistance moving to acronis backup solutions](#)
- [acronis migration assistance moving to acronis backup solutions .pdf](#)
 - [add on configuration assistance on heroku](#)
 - [add on configuration assistance on heroku .pdf](#)
 - [ai and machine learning service integration guiding businesses with tencent cloud](#)
 - [ai and machine learning service integration guiding businesses with tencent cloud .pdf](#)

- [alibaba cloud account creation assistance](#)
- [alibaba cloud account creation assistance .pdf](#)
- [alibaba cloud account creation services](#)
- [alibaba cloud account creation services .pdf](#)
 - [alibaba cloud revolutionizing e commerce and business solutions](#)
 - [alibaba cloud revolutionizing e commerce and business solutions .pdf](#)
 - [alibaba cloud security configurations best practices for secure deployments](#)
 - [alibaba cloud security configurations best practices for secure deployments .pdf](#)
 - [alibaba cloud training and certifications](#)
 - [alibaba cloud training and certifications .pdf](#)
 - [alibaba cloud transforming e commerce through cloud computing](#)
 - [alibaba cloud transforming e commerce through cloud computing .pdf](#)
 - [alternative programming languages their role and importance](#)
 - [alternative programming languages their role and importance .pdf](#)
 - [amazon s3 bucket configurations setup and security policies](#)
 - [amazon s3 bucket configurations setup and security policies .pdf](#)
 - [an in depth analysis of amazon web services aws](#)
 - [an in depth analysis of amazon web services aws .pdf](#)
 - [api and authentication setup on google cloud platform](#)
 - [api and authentication setup on google cloud platform .pdf](#)
 - [api development on scaleway](#)
 - [api development on scaleway .pdf](#)
 - [api development platforms enhancing c api testing and development](#)
 - [api development platforms enhancing c api testing and development .pdf](#)
 - [api development tutorials create rest apis using go](#)

migrating to new platforms must prioritize mobile optimization. This goes beyond simple responsiveness; it involves ensuring site speed, ease of navigation, and functionality across various devices. Statistics show that a large percentage of users abandon sites that do not load within three seconds, which emphasizes the importance of performance during and post-migration.

Moreover, user behavior and demographics provide insight into the expectations that different segments of an audience may have. Understanding these cultural expectations can help businesses fine-tune their site designs and content strategies following migration to enhance engagement and retention.

In addition to user experience, businesses should consider how their migration practices align with broader social values like sustainability and corporate social responsibility. Advocating for and adopting eco-friendly technologies during migration can resonate well with consumers who prioritize environmental stewardship, thereby boosting brand engagement.



Environmental Concerns in Migration

The environmental impact of technology is a pressing concern in an age where climate change has taken center stage. Migrating a website may involve extensive use of energy and hardware resources, especially when transitioning between data centers or server environments. Businesses need to recognize and assess this aspect during their migration planning.

Choosing hosting solutions with sustainability in mind can drastically reduce the ecological footprint of migration processes. Many data centers today offer "green" services that utilize renewable energy sources, energy-efficient hardware, and optimized cooling systems, all contributing to lower carbon emissions.

Additionally, migrating to more efficient platforms such as cloud solutions that automatically scale resources up and down based on demand can optimize energy expenditures. By emphasizing environmental responsibility throughout their operations, businesses can not only reduce their impact on the planet but also enhance their brand image as socially conscious and sustainable organizations.

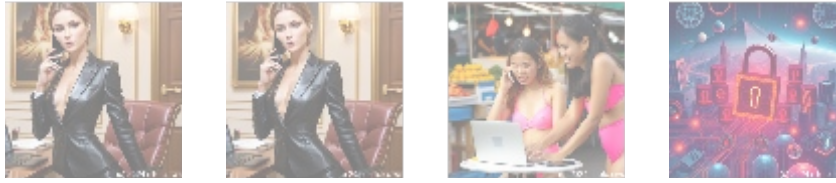


Legal Aspects of Migration Support

As organizations embark on the migration journey, navigating the legal landscape becomes paramount. Contracts with current hosting providers may contain clauses that need to be carefully reviewed to avoid breaches that could result in penalties or service interruptions.

Moreover, intellectual property rights concerning content, images, and proprietary technology must also be clearly delineated before initiating a migration. It's vital for organizations to understand what assets they own and what could be at risk if migration processes are not handled appropriately.

To further enhance security during migration, companies should proactively engage with legal counsel who specialize in digital and technology law. This ensures compliance with all contractual obligations related to technology use as well as data protection measures. With increasing scrutiny on digital privacy and rights management, having legal safeguards in setting up new environments can protect against unforeseen liabilities.

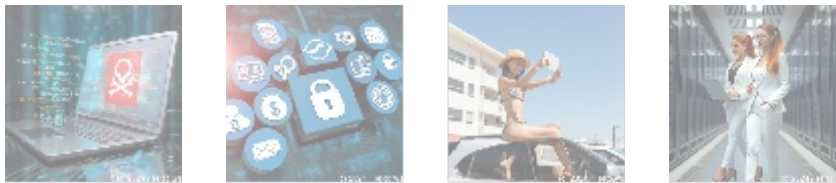


Historical Context of Website Migration

The evolution of website migration practices over the years highlights the dramatic advancements in technology and best practices. In the early stages of the internet, migrating a website was often a cumbersome and error-prone manual process. Organizations typically relied on minimal tools, which led to high levels of risk associated with data loss and service disruption.

As web technologies evolved, so too did the methods for effectively executing migrations. Modern tools and automated solutions have simplified many aspects of migration, allowing for systematic and reliable data transfers, configuration adjustments, and testing of new environments prior to going live. History shows a positive correlation between adopting contemporary migration practices and a business's ability to maintain continuity, optimize performance, and provide exceptional user experiences.

In addition, the increasing prevalence of cloud computing has reshaped how organizations approach migrations today. Businesses can now transition to scalable, flexible environments that allow for ongoing improvements and updates that were often challenging in earlier hosting configurations. This history serves as a reminder of the importance of investing in migration best practices that are innovative and fit the current technological landscape.



Technological Innovations Impacting Migration

Emerging technological innovations significantly influence the website migration process, enabling organizations to execute transitions with greater efficiency and efficacy. The rise of cloud-based solutions allows businesses to migrate to elastic computing environments capable of adapting resources based on real-time user demand.

Familiarity with modern content delivery networks (CDNs), application programming interfaces (APIs), and migration tools can also streamline the migration process. These technologies facilitate faster data transfer, improved site performance, and better resource allocation. For example, utilizing a CDN can improve a website's load times by caching content closer to users, ensuring a seamless experience during and after migration.

Another notable advancement is the role of continuous integration and deployment tools that automate validation, testing, and deployment processes.

- [Legal Terms](#)

- [Main Site](#)

- Why buying here:

1. Outstanding Pros ready to help.
2. Pay Crypto for Fiat-only Brands.
3. Access Top Tools avoiding Sanctions.
4. You can buy in total privacy
5. We manage all legalities for you.

These tools allow organizations to execute their migrations with minimal manual intervention while ensuring quality control throughout the pipeline. By leveraging such tools, organizations can enhance their ability to recover swiftly from challenges that may arise during the migration process, ensuring that they meet performance objectives.

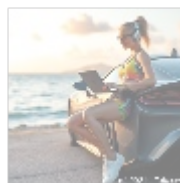
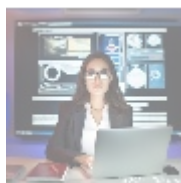


Psychological Aspects of Supporting Clients During Migration

The psychological dimensions of website migration are often overlooked, yet they are essential in ensuring a smooth transition. Clients undergoing migration may experience significant anxiety regarding the potential for data loss, site outages, and the overall impact on their business operations. These fears can lead to strained relationships between service providers and clients if not addressed adequately.

Effective client communication is necessary during the migration process. Service providers should engage clients transparently, providing them with regular updates on migration progress, timelines, and potential risks. A well-structured communication strategy can alleviate apprehensions and foster trust, ultimately encouraging customer retention.

Additionally, offering proactive reassurance through best practices ensures clients feel informed and involved throughout the process. Building a positive, collaborative relationship enhances the customer's experience, benefiting the organization by solidifying ongoing partnerships and promoting favorable feedback.



Conclusion: The Essential Role of Website Migration Support

In conclusion, the importance of website migration support cannot be overstated in today's fast-paced digital environment. By encompassing a wide range of perspectives, including economic, regulatory, social, and technological factors, effective migration support is critical in navigating the complexities associated with transferring websites.

Emphasizing expert migration support enables organizations to mitigate risks, enhance user experience, protect SEO rankings, and ensure compliance with regulations all while maintaining operational continuity. Organizations that invest in such comprehensive migration support not only streamline their transitions but also pave the way for enhanced performance and enduring relationships with their customers.

As businesses adapt to an ever-evolving digital landscape, the decision to prioritize and invest in effective website migration support can drive significant long-term

benefits, propelling growth and success in the digital marketplace.

Interested in Our Website Migration Support Services?

The price for our comprehensive Website Migration Support Service is just \$749. Please proceed to our [Checkout Gateway](#) to pay the indicated amount for the service. Once you've completed your payment, reach out to us via email, phone, or our online form with your payment receipt and details to arrange your migration service. Thank you for considering us for your needs!

© [2025+ Telco.Ws](#). All rights reserved.

