



## Website Migration Services: Assisting Users in Migrating to DreamHost



### The Essence of Website Migration

Website migration is a critical process that involves the comprehensive relocation of an existing website from one hosting environment to another. This could include a change of web hosting providers, migration to a different content management system (CMS), or even a total overhaul of a site's architecture including its domain name, design framework, and underlying technologies. The significance of website migration lies not only in the physical transfer of data but also in its ability to greatly enhance site performance, bolster security, and improve overall user experience. For organizations venturing into the digital world, transitioning to a reliable and robust hosting service like DreamHost can be a transformative step, catalyzing growth and improving operational efficiency.

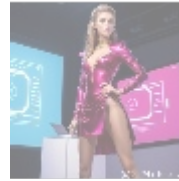
The migration journey, however, is fraught with challenges that can threaten the integrity and performance of a website if not handled properly. Potential risks range from data loss and extended downtime during the transition to adverse SEO impacts and compatibility issues with new technology stacks. For instance, failing to correctly redirect existing URLs can result in broken links that not only frustrate users but also harm the site's SEO ranking. Thus, understanding how to effectively manage these risks during the migration process is essential for ensuring operational continuity and minimizing disruption to users. As businesses evolve, the need for enhanced server capabilities, improved features, and better scalability increasingly necessitates migration to new hosting solutions that can provide these advantages.

Investing in a seamless website migration service is vital; it ensures that your transition to DreamHost is smooth and devoid of complications, thereby safeguarding against potential traffic loss and preserving a consistently positive user experience throughout the migration process. It is critical to recognize that while migration can offer substantial benefits, the execution strategy employed will significantly influence the overall success. Careful planning, expert guidance, and rigorous testing throughout the migration journey are all key elements of a successful strategy.

- **Performance Improvement:** Transitioning to DreamHost not only means accessing faster server performance but also benefiting from state-of-the-art

technologies like SSD storage, which dramatically reduces loading times, while optimizing the user experience and enhancing engagement.

- **Enhanced Security Measures:** Migrating to DreamHost places your website under robust layers of security protection, including firewalls, DDoS protection, and regular monitoring, all of which are crucial in reducing vulnerabilities and ensuring that sensitive user data is safeguarded.
- **Scalability Options:** DreamHost offers a variety of scalable hosting plans that are tailored to align with your business growth trajectory. This adaptability ensures that organizations can handle increased traffic demands without performance dips, thus maintaining user satisfaction even during peak times.
- **Comprehensive Support:** With 24/7 technical support available, any challenges encountered during or after the migration process can be promptly addressed. This minimizes potential downtimes and ensures continuous operation, allowing businesses to maintain their reputation for reliability.



## Analyzing Website Migration from Multiple Perspectives

### Economic Perspective

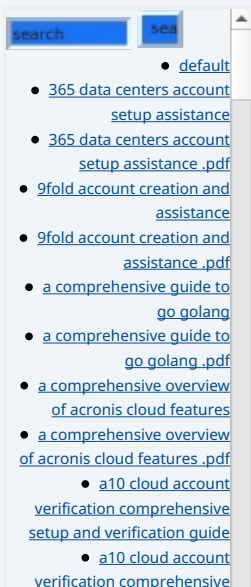
From an economic standpoint, the implications of website migration are profound, impacting both direct and indirect operational costs. By transitioning to a robust platform like DreamHost, businesses can realize significant savings on operational expenses due to increased system efficiency, reduced downtime, and better performance capabilities. Faster loading times can lead to higher conversion rates, which positively affects revenue. Moreover, when businesses invest in professional migration services, they reduce the risk of costly errors commonly associated with self-managed migrations, errors that can result in revenue loss from customer dissatisfaction or service outages.

Consider a typical e-commerce website that experiences a slowdown in loading speeds during peak traffic periods. The financial implications of lost sales due to an underperforming site can be staggering. Conversely, a well-executed migration to a high-performance host like DreamHost can enhance user experience, encourage longer site durations, and convert more visitors into paying customers. Thus, effective migration is not merely an IT decision; it can be a significant driver of business strategy and profitability.

### Political Perspective

Website migration is often shaped by political factors, such as government regulations regarding data security, privacy, and consumer protection. Businesses that operate internationally must navigate compliance with laws such as the General Data Protection Regulation (GDPR) in the European Union, which governs the management of personal data. Failure to comply with such regulations can lead to significant financial penalties and reputational damage.

By migrating to a reputable provider like DreamHost that prioritizes compliance, businesses can ensure that they are aligned with these regulatory demands, thus protecting their interests and those of their customers. This alignment also



enhances brand trust, something critical in today's competitive marketplace where consumers are increasingly wary of data misuse.

## Technological Perspective

The technological implications of migration are significant and multi-dimensional. DreamHost capitalizes on cutting-edge hosting technologies, including Solid-State Drive (SSD) storage, which delivers faster read/write times and improved performance. Moreover, the incorporation of Content Delivery Networks (CDNs) allows for geographically dispersed access, ensuring that users from different parts of the world can access the website more quickly and reliably.

Additionally, as technology itself continues to evolve with trends such as cloud computing, containerization, and serverless architectures, keeping pace with the latest tools and software is essential for maintaining a competitive advantage. Regular updates and migration of software components ensure compatibility with the latest standards, which can lead to enhanced functionality and user experience. Migrifying a website is therefore not simply about transferring datasets; it's an opportunity to enhance technological alignment and strengthen operational resilience.

## Environmental Perspective

Companies today are increasingly mindful of their carbon footprint and environmental impact. Selecting a hosting provider such as DreamHost, which emphasizes eco-friendly practices including the use of renewable energy sources in their operations becomes critical. By migrating to such a provider, businesses can not only meet their goals for environmental responsibility but also appeal to eco-conscious consumers who prefer to engage with brands that demonstrate corporate social responsibility.

Moreover, choosing a green host can aid in long-term brand positioning and marketing strategies, particularly as consumers become more alert and responsive to the practices of the brands they support. This can lead to enhanced brand loyalty and a superior market reputation, further solidifying the rationale behind migration to a provider like DreamHost.

## Legal Perspective

The legal landscape surrounding website migration is extensive and must be navigated with great care. Websites must comply with a plethora of laws, from copyright regulations to e-commerce guidelines. Ensuring all content is compliant during the migration process is crucial to avoid potential legal challenges, which could include lawsuits or fines.

Moreover, careful planning is necessary to ensure sensitive user data and personal information are handled according to established privacy laws, which evolve regularly. Accounts with outdated compliance could lead to severe ramifications, including penalties and the loss of customer trust. Therefore, incorporating legal expertise or consultation during the migration process enhances the likelihood of a compliant and successful transition.

## Social Perspective

Website migration carries substantial social implications, primarily regarding user experience and brand reputation. A cohesive and well-executed transition minimizes disruptions that could alienate existing users, preserving customer loyalty. On the other hand, poor handling of a migration can severely damage user trust and ultimately lead to a decline in customer satisfaction.

[setup and verification guide .pdf](#)

- [a10 networks comprehensive overview and impact analysis .pdf](#)
- [a2 hosting a comprehensive overview of web hosting solutions .pdf](#)
- [a2 hosting account verification services our main company .pdf](#)
- [a2 hosting performance evaluations understanding efficiency and metrics .pdf](#)
- [access control .pdf](#)
- [acronis account setup and approval services .pdf](#)
- [acronis cloud security assessments ensuring robust cloud security .pdf](#)
- [acronis migration assistance moving to acronis backup solutions .pdf](#)
- [add on configuration assistance on heroku .pdf](#)
- [ai and machine learning service integration guiding businesses with tencent cloud .pdf](#)
- [alibaba cloud account creation assistance .pdf](#)
- [alibaba cloud account creation services .pdf](#)
- [alibaba cloud revolutionizing e-commerce and business solutions .pdf](#)
- [alibaba cloud security configurations best practices for secure deployments .pdf](#)
- [alibaba cloud training and certifications .pdf](#)
- [alibaba cloud transforming e-commerce through cloud computing .pdf](#)
- [alternative programming languages their role and importance .pdf](#)
- [alternative programming](#)

Moreover, understanding demographic user data allows businesses to tailor their new website effectively, thereby ensuring it resonates well with their target audience. This attention to detail is vital; a user-friendly interface that meets customer expectations can lead to increased engagement and improved retention rates. In today's competitive market, retaining existing customers can be just as important as attracting new ones.

## Historical Perspective

The historical context surrounding website migration reveals critical insights into patterns of technological advancements and shifting user expectations. Over the past two decades, we have witnessed dramatic evolutions in web design standards, functionality requirements, and user preferences highlighting the necessity for businesses to adapt in order to stay relevant.

By reviewing previous migrations within their industry, organizations can identify which strategies were successful and which pitfalls to avoid. Recognizing the historical changes in technology allows for a better-informed decision-making process. This understanding can equip businesses with the foresight necessary to implement a migration strategy that aligns with both historical trends and future demands.



## Technical Aspects of Website Migration

### Migration Process Overview

The process of website migration generally unfolds through several critical steps that, when executed properly, help ensure success. The initial phase involves thorough planning, which includes conducting a comprehensive audit of the current website and evaluating existing resources specifically, identifying data structures and assessing the compatibility of the content management system (CMS) being used. This phase may also involve gathering insights from various stakeholders, ensuring that all business needs are addressed. Additionally, it's advisable to establish a clear communication plan to keep all relevant parties informed throughout the migration process.

The actual transfer of data involves moving files, databases, and configurations to DreamHosts server environment. Ensuring accurate replication of all necessary data occurs during this transfer is imperative in order to prevent loss, corruption, or incompatibility of important information. Using secure transfer protocols can greatly enhance the safety and reliability of this phase.

### Post-Migration Practices

Once migration is complete, a series of best practices should follow to confirm that everything operates as intended. These practices include:

- Conducting thorough functionality tests to ensure all features, links, and interactive elements operate as expected. This includes checking for broken links, verifying the performance of forms, and ensuring that dynamic elements function correctly.
- Setting up proper URL redirects to avoid broken links which not only frustrate users but can also lead to a decline in search engine rankings. Implementing

- [Legal Terms](#)
- [Main Site](#)

• Why buying here:

1. Outstanding Pros ready to help.
2. Pay Crypto for Fiat-only Brands.
3. Access Top Tools avoiding Sanctions.
4. You can buy in total privacy
5. We manage all legalities for you.

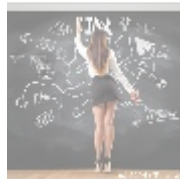
301 redirects is recommended to maintain SEO integrity.

- Monitoring site performance closely for any unforeseen issues, including loading speed or downtime. This monitoring can help to promptly rectify any immediate problems that arise post-migration.
- Conducting regular backups to protect against data integrity issues that may arise during the transition period. A reliable backup ensures that you can quickly recover your website in case of unexpected failures.
- Gathering feedback from user interactions to understand satisfaction levels and identify lingering pain points or areas for improvement, ensuring continuous enhancement of the user experience.

## Speed and Security Optimization Techniques

Optimizing both website speed and security post-migration is critical to ensure the best user experience. Techniques such as implementing caching mechanisms (which store copies of files temporarily for faster load times), optimizing images, and acquiring Secure Sockets Layer (SSL) certificates can significantly enhance a site's performance. SSL certificates are essential for encrypting data exchanged between users and the website, thus fostering trust and security.

Additionally, deploying robust security measures including firewalls and anti-malware software provides a safety net against external threats that could compromise data integrity. Regular updates and patches to all software, including the CMS and plugins, further enhance security and performance. Establishing a routine for these updates will minimize vulnerabilities and maintain a secure environment.



## Conclusion: Seamless Migration to DreamHost

In conclusion, the importance of effective website migration cannot be overstated. Opting for professional website migration services enables users to smoothly transition their existing websites to DreamHost while avoiding complications that could disrupt business operations. By leveraging state-of-the-art technology, increased security measures, and continual support systems, businesses are able to focus their efforts on growth and user engagement rather than the complexities associated with technical transitions.

Whether you're a new startup seeking to tap into a scalable hosting solution or a well-established enterprise aiming to optimize your online presence, a well-executed migration strategy leads to long-term success and improved customer satisfaction metrics. To ensure the migration process is comprehensive and tailored to your needs, partnering with experts who understand the intricacies of the process will result in a far more favorable outcome.

### Elevate Your Online Presence Today!

If you're ready to migrate your website to DreamHost and fully optimize your online experience, consider our comprehensive migration service priced at \$850. Please proceed to our [Checkout Gateway](#) to finalize your payment of \$850. For any further questions or assistance, don't hesitate to reach out to us at [www.telco.ws](http://www.telco.ws) through email or phone. Thank you for choosing us to assist

you in your website migration journey!

© [2025+ Telco.Ws](#) . All rights reserved.



© 2024+ Telco.Ws