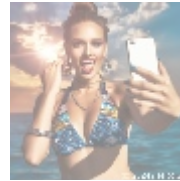
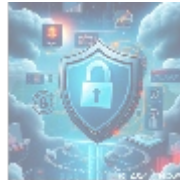
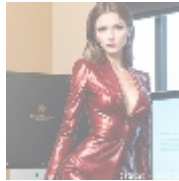
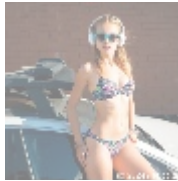




## Site Migration Services to Plesk: Seamlessly Transfer Your Website



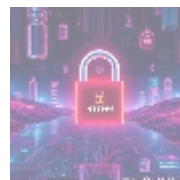
### Understanding Site Migration to Plesk

Site migration to Plesk is a vital service designed for businesses, web developers, and individuals looking to transition their existing websites from a myriad of hosting environments to the powerful Plesk hosting platform. Over the years, Plesk has emerged as a leading control panel that prioritizes usability, efficiency, and security, making it a preferred choice for web hosting management.

In a world where digital presence is critical for success, especially for businesses, ensuring reliability and speed of a website is paramount. As such, when considering a migration to Plesk, users expect not only a seamless transfer experience but also an assurance that their data integrity is preserved during the process. Additionally, minimizing downtime is crucial to maintaining operational continuity and ensuring user satisfaction throughout the migration journey.

Effective site migration to Plesk is paramount for organizations intent on enhancing their overall performance, security posture, and scalability. Leveraging Plesk enables businesses to harness advanced functionalities that optimize their web capabilities, respond to increasing traffic demands, and remain agile to meet the challenges of today's evolving digital landscape.

This article will delve deeply into various perspectives surrounding site migration services to Plesk, exploring their significance and ramifications through multiple lenses: economic, political, social, environmental, legal, historical, scientific, technological, health, psychological, educational, and beyond. This rich examination aims to furnish a comprehensive understanding of how migration services to Plesk can yield significant benefits while addressing potential challenges organizations may encounter during the migration process.



### The Multifaceted Perspectives on Site Migration Services

The process of migrating websites to a Plesk environment is not just a straightforward technical undertaking; it is a complex operation that encompasses a variety of critical perspectives. Each of these aspects provides valuable insights into the significance of the transition and the myriad advantages it brings to organizations:

## Economic Impact

One of the primary motivations for migrating to Plesk is the positive economic impact it can offer organizations. The financial implications of site migration often manifest in various forms:

- **Reduced Downtime:** Effective migration to Plesk can significantly curtail downtime, which is vital for maintaining consistent revenue streams. Any interruption in service can lead directly to lost sales and diminished customer trust, both critical in today's competitive marketplace. By ensuring that the migration is handled efficiently, businesses can avoid the pitfalls associated with prolonged website inaccessibility.
- **Long-term Cost Savings:** Migrating to Plesk typically enhances operational efficiency, reducing the need for extensive technical support and server management. Improved resource allocation and automated processes lead to decreased costs over time. Companies can reallocate funds and personnel to focus on growth and innovation rather than merely managing technical issues.
- **Improved Customer Retention:** A well-optimized website not only attracts new customers but also retains existing ones. Improved loading speeds and increased site reliability directly influence customer satisfaction. Organizations benefit from higher retention rates, which are often more cost-effective than acquiring new customers.

## Political Considerations

The migration of existing websites to Plesk inevitably raises several important political considerations related to data protection, privacy regulations, and compliance:

Organizations must navigate a landscape of regulations that govern how personal and sensitive information should be managed. For instance, compliance with laws such as the General Data Protection Regulation (GDPR) in the European Union and the California Consumer Privacy Act (CCPA) in the United States involves rigorous data governance. During migration to Plesk, organizations must conduct comprehensive audits of their data security policies, storage practices, and access control mechanisms, ensuring they meet legislative requirements. Failure to comply not only risks hefty fines but can also lead to reputational damage and loss of customer trust.

## Social Implications

Effectively managing social implications during site migrations is crucial for maintaining user relationships:

During the migration process, the effect on user experience must be closely monitored. A smooth transition preserves user trust and ensures loyalty, which is typically essential for ongoing engagement. Companies must embrace proactive communication strategies, keeping users informed about any changes and potential downtimes. Transparency is fundamental, as users appreciate being aware of what changes are taking place, how it may impact their experience, and what measures are in place to mitigate any disruptions. Building and maintaining this trust is critical for fostering long-term user relationships and can have

significant implications for a brand's reputation.

## Environmental Concerns

In the modern era, businesses face growing pressure to integrate sustainability into their operational frameworks, including web hosting transitions:

Organizations are increasingly recognizing the importance of adopting environmentally responsible practices. Plesk offers functionalities that help optimize resource use, which can positively impact environmental efforts. Migrating to Plesk enables businesses to embrace enhanced server efficiency and improved resource management capabilities, helping to reduce their overall carbon footprint. By utilizing virtual resources more effectively, organizations contribute to a broader push for sustainability. Emphasizing these efforts can also enhance a company's brand and appeal to environmentally-conscious consumers.

## Legal Obligations

Legal considerations play an indispensable role in any site migration endeavor:

Businesses must ensure they understand and meet their legal obligations throughout the migration process. This includes safeguarding data integrity and protecting sensitive information, particularly during transitions that could expose data to risk. Organizations should implement robust backup solutions to preserve critical data before, during, and after the migration process. Documenting compliance practices is vital for establishing confidence with clients and stakeholders, as it provides a roadmap for adhering to legal standards while minimizing risks associated with potential data breaches, legal liabilities, or litigation. Maintaining a focus on legal compliance fosters a culture of accountability and trust.

## Historical Context

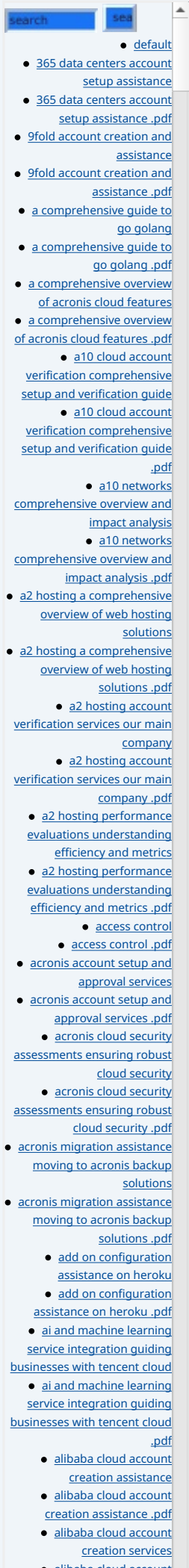
The importance of understanding the historical context surrounding website migrations cannot be overstated:

Over the years, the landscape of hosting technologies has evolved significantly. Today's advanced migration tools and cloud computing capabilities are more sophisticated than ever, helping organizations avoid the challenges associated with older migration practices. Past experiences can provide valuable lessons, equipping organizations with the knowledge needed to execute successful migrations efficiently. Learning from historical pitfalls such as the challenges of previous technologies can help companies navigate the complexities of transitioning to platforms like Plesk with greater assurance.

## Technological Advancements

The technological advancements underpinning site migrations have dramatically influenced the landscape for organizations looking to improve their web hosting capabilities:

Plesk stands out as a versatile control panel that provides modern tools and features designed to facilitate seamless migration processes. With functionalities such as automated data transfer, administrators can reduce the risk of human error, one of the prominent risks in manual migrations. Furthermore, Plesk's compatibility with various content management systems (CMS) enables organizations to create custom migration strategies tailored to their individual needs, streamlining the transition process. By capitalizing on technological advancements, companies can effectively navigate challenges while enhancing



their online presence.

## Health and Psychological Effects

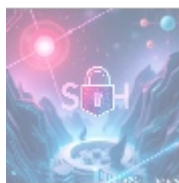
The health and psychological effects of site migration hold significant implications for both staff and organizations:

The anxiety associated with the potential loss of data, downtime, or migration failures can create elevated stress levels among employees involved in the transition. Organizations that prioritize employee well-being by providing adequate training, resources, and support can mitigate this stress. Creating a positive work environment leads to improved morale and productivity, allowing teams to engage more effectively in the migration process. Additionally, fostering resilience within the workforce enhances the team's ability to adapt while navigating changes brought about by the migration.

## Educational Implications

Investing in employee education and training about Plesk's capabilities and migration strategies proves to be a sound business decision:

Organizations that prioritize employee education improve their capability to manage site migrations effectively. Training helps employees better understand Plesk's functionalities, equipping them with the skills required to facilitate smooth transitions. Additionally, fostering a culture of continuous learning within the workforce enables organizations to become more agile and better equipped to embrace future technological changes.



## Core Overview of Site Migration Services to Plesk

Site migration services to Plesk are a critical offering for organizations intent on enhancing their web hosting infrastructure and overall digital strategy. As companies evolve and seek improved performance, enhanced security measures, and ensured scalability, transitioning to the Plesk platform presents viable solutions.

## Technical Specifications and Solutions

Plesk is renowned for offering a comprehensive web hosting control panel, equipped with state-of-the-art tools and features necessary to facilitate various website migrations, whether they are straightforward or multifaceted. Here are some key offerings that highlight the capabilities of Plesk:

- **Multifaceted Migration Tools:** Plesk supports the migration of various content management systems (CMS), such as WordPress, Joomla, and Drupal. These functionalities enable seamless imports and transfers, allowing businesses to adopt a platform that best fits their web development needs without fear of compatibility barriers.
- **Automated Backups:** Plesk provides robust backup solutions that ensure comprehensive preservation of critical data before, during, and after the migration process. Regular backup routines act as a safety net against potential data loss, offering peace of mind to webmasters and end-users alike.

- [Legal Terms](#)
- [Main Site](#)

- Why buying here:

1. Outstanding Pros ready to help.
2. Pay Crypto for Fiat-only Brands.
3. Access Top Tools avoiding Sanctions.
4. You can buy in total privacy
5. We manage all legalities for you.

- **Resource Management:** Plesks environment enables real-time monitoring and analysis of server resources, empowering administrators to make informed decisions about resource allocation and efficiency. This empowers organizations to optimize their web performance effectively.
- **Advanced Security Features:** Built-in security measures such as firewalls, SSL certificates, and malware scanning programs safeguard websites from potential vulnerabilities during and after the migration process, fortifying defense mechanisms and contributing to overall security posture.
- **Responsive Customer Support:** Plesk users benefit from extensive resources, including documentation, community support, and direct professional assistance available through various channels. This support helps facilitate swift resolution of potential issues arising during the migration process.

## Advantages of Plesk Migration Services

The advantages associated with engaging professional migration services to Plesk are numerous and impactful:

1. **Increased Uptime:** Plesk is engineered to enhance server reliability effectively, resulting in reduced downtime and significantly increased accessibility for website users. This improvement is critical for ensuring a positive user experience.
2. **Enhanced Site Performance:** With optimized resource allocation features, Plesk enables organizations to deliver websites that run faster and more efficiently. This not only boosts user interaction but also positively influences search engine rankings.
3. **User-Friendly Management Interface:** Plesks intuitive dashboard simplifies website management tasks, making it easily accessible even for users who may not have extensive technical knowledge. This lowers the barrier to entry for organizations looking to enhance their digital presence.
4. **Comprehensive Technical Support:** Organizations leveraging Plesk benefit from a wealth of resources, including extensive documentation, tutorials, and interactive community support, ensuring rapid resolutions to potential obstacles and challenges.
5. **Cost-Effective Solutions:** Plesks efficiencies can lead to a decline in long-term operational costs. Optimized server management reduces labor requirements, enabling organizations to allocate resources to initiatives that drive growth and innovation.

## Real-World Applications

Numerous organizations across various industries have successfully migrated to Plesk, reaping substantial rewards in their web infrastructures:

For instance, an e-commerce platform that recently migrated to Plesk reported an impressive 40% increase in loading speed. This improvement translated to higher customer retention rates and dramatically reduced cart abandonment rates. Other businesses in sectors such as SaaS, hospitality, and online education have also reported enhanced reliability post-migration, proving the tangible benefits derived from effective migration services and emphasizing the importance of investing in this strategic transition.

## Case Study Example

To further underscore the advantages of Plesk migration, consider a case study involving a mid-sized online retail company. Before migrating, the company faced challenges related to slow site performance, frequent downtime, and escalating



hosting costs using a shared server. After partnering with telco.ws for their migration to Plesk, they experienced:

- **Improved Uptime:** Increased from 92% to 99.9%
- **Loading Speed:** Average page load time decreased from 5 seconds to just 1.5 seconds
- **Cost Savings:** Annual hosting costs reduced by 30% due to more efficient resource allocation
- **User Satisfaction:** Customer satisfaction scores increased substantially, as evidenced by improved support ratings and positive feedback.

This case illustrates the potential effectiveness of site migration services to Plesk, emphasizing how organizations can achieve their goals and maximize their digital capabilities through strategic investments.



## Final Thoughts on Site Migration Services to Plesk

In conclusion, site migration services to Plesk constitute a multifaceted operation, marked by a multitude of considerations that enforce their importance for businesses operating in today's digital-sphere. From wielding economic advantages to ensuring compliance with legal mandates, migration services serve as strategic solutions that elevate a business's online presence from a mere operational function to a component of competitive advantage. Companies contemplating such transitions must grasp the comprehensive implications involved, optimizing the opportunity by partnering with professional service providers who specialize in linking organizations to the Plesk environment smoothly.

Site migration transcends a mere technical process; it is a profound strategic move that fosters opportunities for growth, enhanced functionality, and increased operational resilience. By acknowledging and analyzing the various aspects of migration services, organizations can optimize their investments, thereby thriving in a dynamic digital landscape that continuously evolves.

### Explore Our Site Migration Services

If you are looking to migrate your website to Plesk, our specialized Site Migration Services are available for a competitive price of \$850. Interested in knowing more? Feel free to contact us at [www.telco.ws](http://www.telco.ws) using email, phone, or our online form. If you are already convinced about buying, please note that the price for our Site Migration Services is \$850. Proceed to our [Checkout Gateway](#) and use our Payment Processor to pay the indicated amount of \$850 in favor of our Company by following the provided instructions. Once you have paid, please contact us via email, phone, or through our site with the payment receipt and your details to arrange your Site Migration Services to Plesk. Thank you for considering us for your migration needs!

