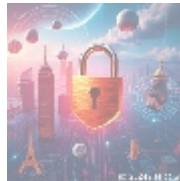


can be included here



Google Cloud Identity: Comprehensive Setup Guide

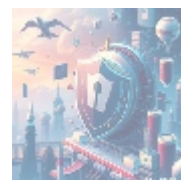
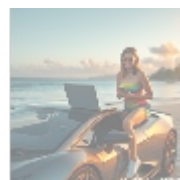


Overview of Google Cloud Identity

Google Cloud Identity serves as a powerful solution designed for effective user and access management within organizations. This platform allows businesses to centralize their identity management practices, streamline workflows for user access, and enforce stringent security measures in an ever-evolving cloud environment. In essence, Google Cloud Identity is more than just a cybersecurity tool; it represents a fundamental shift towards modern, cloud-based identity management systems that prioritize both security and user experience.

The challenges faced by organizations today include managing a diverse workforce, protecting sensitive data, and ensuring compliance with various regulations. Google Cloud Identity addresses these challenges by offering an array of functionalities, including Single Sign-On (SSO), multi-factor authentication (MFA), and comprehensive user lifecycle management. These features work synergistically to mitigate risks associated with unauthorized access while simplifying the login process for users. With the increasing prevalence of remote work and bring-your-own-device (BYOD) policies, this level of security and convenience has become imperative for organizations.

In this article, we will explore the significance of Google Cloud Identity from multiple perspectives: economic, political, social, legal, and technological. Each angle reveals a unique facet of identity management that underscores the critical role of such solutions in contemporary IT infrastructures.



Economic and Business Implications

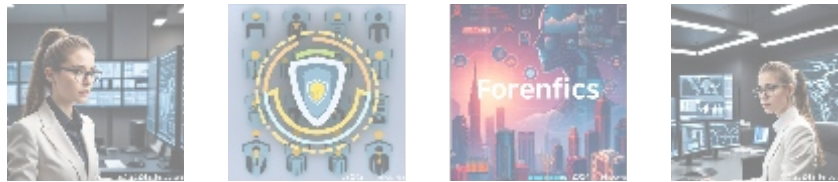
The economic ramifications of adopting Google Cloud Identity are significant. By migrating to a cloud-based identity management system, organizations can experience substantial cost savings compared to traditional on-premises solutions. Consider the expenses tied to maintaining physical servers, software licenses, and the ongoing need for IT personnel to manage these systems costs that can quickly

add up. By utilizing Google Cloud Identity, businesses reduce their reliance on extensive IT infrastructure, translating to lower operational expenses and potential reallocation of budget towards innovation and growth initiatives.

Additionally, the integration of Google Cloud Identity allows organizations to enhance their agility. In today's dynamic market, the ability to onboard new users quickly and efficiently is a competitive advantage. Enhanced self-service capabilities empower employees to manage their accounts, reducing the administrative tasks placed on IT staff, which in turn allows for quicker response times to market changes and business needs.

Moreover, organizations facing increased scrutiny from regulatory bodies find that Google Cloud Identity simplifies compliance with laws such as the General Data Protection Regulation (GDPR) and the Health Insurance Portability and Accountability Act (HIPAA). By implementing comprehensive identity management and stringent access controls, organizations not only mitigate legal risks but also enhance their reputation as responsible entities committed to safeguarding sensitive data.

In summary, investing in Google Cloud Identity is not just an upgrade; it is a strategic move towards improving operational efficiency, ensuring compliance, and securing the organization's competitive edge in an ever-evolving market landscape.



Social, Environmental, and Legal Concerns

From a social perspective, the implementation of Google Cloud Identity plays a critical role in fostering a culture of security awareness within organizations. Training employees in secure password practices and promoting vigilance against phishing attacks create a workplace environment where security is prioritized at all levels. This heightened awareness not only bolsters the organization's overall security posture but also empowers employees, encouraging them to take an active role in protecting sensitive information.

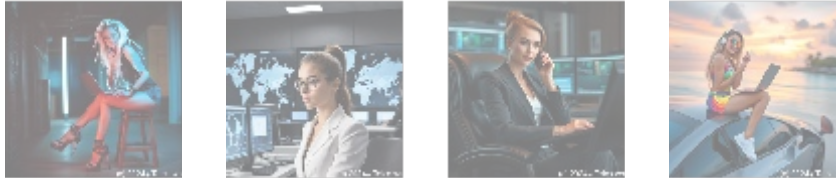
In an age where digital collaboration is prevalent, Google Cloud Identity's user-friendly interface and straightforward authentication procedures enhance the user experience, making it easier for employees to engage with necessary tools while maintaining secure access to sensitive information.

Addressing environmental concerns associated with digital operations is increasingly important. Transitioning to cloud-based systems allows organizations to optimize their IT resources, resulting in a smaller digital carbon footprint. Effective identity management reduces unnecessary data redundancy and optimizes device use, aligning with broader sustainability goals while also contributing to efficiency.

Legally, organizations are compelled to comply with identity theft prevention measures, and powerful solutions like Google Cloud Identity reinforce these capabilities. Features such as detailed audit logs, adaptive access controls, and responsive user management protocols foster compliance with legal standards and protect the organization from potential litigations arising from data breaches and inadequate identity controls.

- default
- [365 data centers account setup assistance](#)
- [365 data centers account setup assistance .pdf](#)
- [9fold account creation and assistance](#)
- [9fold account creation and assistance .pdf](#)
- [a comprehensive guide to go golang](#)
- [a comprehensive guide to go golang .pdf](#)
- [a comprehensive overview of acronis cloud features](#)
- [a comprehensive overview of acronis cloud features .pdf](#)
 - [a10 cloud account verification comprehensive setup and verification guide](#)
 - [a10 cloud account verification comprehensive setup and verification guide .pdf](#)
 - [a10 networks comprehensive overview and impact analysis](#)
 - [a10 networks comprehensive overview and impact analysis .pdf](#)
- [a2 hosting a comprehensive overview of web hosting solutions](#)
- [a2 hosting a comprehensive overview of web hosting solutions .pdf](#)
 - [a2 hosting account verification services our main company](#)
 - [a2 hosting account verification services our main company .pdf](#)
 - [a2 hosting performance evaluations understanding efficiency and metrics](#)
 - [a2 hosting performance evaluations understanding efficiency and metrics .pdf](#)
 - [access control](#)
 - [access control .pdf](#)
- [acronis account setup and approval services](#)
- [acronis account setup and](#)

Overall, the implementation of Google Cloud Identity addresses social imperatives while aligning organizational practices with environmental and legal obligations, resulting in a more responsible and compliant operational model.



Historical Context and Technological Evolution

The evolution of identity management solutions can be traced through several pivotal shifts in technology. Historically, organizations relied heavily on on-premises systems for identity management. These systems, while serviceable, not only incurred substantial maintenance costs but also exposed organizations to numerous security vulnerabilities. The move toward cloud-based solutions, epitomized by platforms like Google Cloud Identity, marks a fundamental transformation in the approach to identity and access management.

As organizations began to recognize the pressing need for scalable, flexible, and secure solutions, cloud identity systems gained prominence. Google Cloud Identity stands out with its cutting-edge technological features, including advanced authentication mechanisms, enhanced security protocols, and seamless integration with an extensive suite of Google services. Users can benefit from a unified experience across a range of applications, further streamlining their operations and enhancing productivity.

The integration of machine learning capabilities within Google Cloud Identity elevates its security framework, enabling real-time detection of suspicious activities. By leveraging advanced analytics, organizations benefit from predictive security measures that actively adapt to the dynamic threat landscape, ensuring higher levels of protection for sensitive organizational data.

This ongoing evolution in technology reflects a broader trend in the industry toward increasingly secure, efficient, and user-friendly identity management solutions, setting the stage for the future of digital authentication.



Case Study: Implementing Cloud Identity in a Corporate Environment

To illustrate the practical benefits of Google Cloud Identity, let's consider a case study of a mid-sized corporation undergoing a transition to remote work due to external circumstances. Prior to implementation, the company faced challenges in maintaining secure access to its resources while managing a diverse and shifting workforce tasked with carrying out operations that heavily depended on digital collaboration tools.

By adopting Google Cloud Identity, the corporation was able to implement a system that enabled two-factor authentication and Single Sign-On across all platforms utilized by employees, resulting in significant improvements across several key areas:

• [Legal Terms](#)

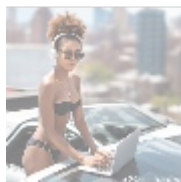
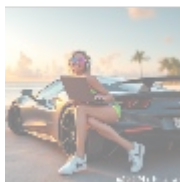
• [Main Site](#)

• Why buying here:

1. Outstanding Pros ready to help.
2. Pay Crypto for Fiat-only Brands.
3. Access Top Tools avoiding Sanctions.
4. You can buy in total privacy
5. We manage all legalities for you.

- **Increased Productivity:** Employees enjoyed an enhanced level of efficiency due to simplified access protocols, which allowed for immediate engagement with the necessary tools and documents. The elimination of repetitive login prompts improved workflow and allowed employees to focus on their tasks.
- **Heightened Security:** With a marked decrease in security incidents tied to compromised credentials, the overall risk to organizational data was substantially reduced. A proactive security environment discourages potential threats and fosters confidence among employees and stakeholders.
- **Cost Savings:** There was a significant decrease in helpdesk calls regarding password resets, which led to considerable cost reductions. With IT staff focused on higher-value tasks rather than constant troubleshooting, the organization was able to maximize employee efficiency.
- **Enhanced Compliance:** Improved management of user access controls facilitated easier adherence to regulatory standards, resulting in substantial reductions in compliance-related overhead.

This case study exemplifies how the thoughtful implementation of Google Cloud Identity not only addresses security challenges but also enhances operational efficiencies, setting a clear path for future growth and innovation within the organization.



Conclusion

In conclusion, the need for secure and efficient identity management solutions has never been more pressing than in today's digital landscape, where threats to data confidentiality and integrity are omnipresent. Google Cloud Identity emerges as a pivotal player in this realm, offering comprehensive solutions for managing user access while ensuring robust security protocols are in place.

Understanding its significance through diverse perspectives—economic, social, technological, and environmental—provides organizations with valuable insights into the transformative potential of effective identity management. By investing in platforms like Google Cloud Identity, businesses not only enhance security but also ensure compliance and foster operational efficiency.

As organizations continue to navigate the complexities of the digital space and embrace transformative technologies, integrating Google Cloud Identity into existing infrastructures is not merely beneficial; it is critical for sustained growth, resilience, and security in a rapidly changing world.

Get Started with Google Cloud Identity Today!

If you're ready to enhance security and streamline access management in your organization, our Google Cloud Identity implementation service is available starting at just **\$749**. To proceed, visit our [Checkout Gateway](#), and follow the instructions provided. After completing your payment of \$749, please contact us with the payment receipt along with your organization details to arrange your Google Cloud Identity setup. We appreciate your trust in us for your digital security needs!

