



## The Significance of Subscription Learning Platforms in Ruby Education

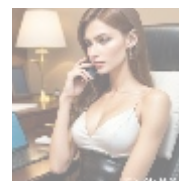


### Understanding Subscription Learning Platforms

Subscription learning platforms have fundamentally transformed how educational content is delivered and consumed, particularly in the programming domain. These platforms provide learners with unlimited access to a wealth of digital resources, such as video tutorials, coding exercises, and community support, all for a monthly or annual fee. The appeal of this model is its emphasis on continual learning an essential factor in today's fast-paced technological landscape.

With the popularity of Ruby, an elegant and powerful programming language growing, learning platforms specializing in Ruby are emerging as vital tools for aspiring and seasoned developers alike. By enabling users to access educational materials anytime and anywhere, these platforms help accommodate various learning styles and paces. For instance, a busy professional might prefer to partake in short, focused lessons during lunch breaks or after work, while a dedicated learner may spend hours exploring advanced topics on weekends. This flexibility not only promotes effective learning but also fosters a sense of ownership and responsibility over one's own educational journey.

Additionally, subscription models often provide a clear financial structure that benefits both learners and educators. Instead of investing heavily in one-off courses that may become outdated, learners can subscribe to a platform that continually refreshes its content, ensuring that they are always abreast of the latest developments in Ruby programming.



### Comprehensive Analysis of Subscription Learning Platforms

To truly appreciate the impact of subscription learning platforms for Ruby programming, we must delve into a multifaceted analysis that covers various

perspectives:

## Economic Perspective

From an economic perspective, the subscription learning model democratizes access to high-quality education. By offering comprehensive resources at a more affordable price than traditional education, this model provides opportunities for diverse demographics, including underserved populations who may previously have lacked access to coding education. This approach can significantly reduce financial barriers, allowing anyone with an internet connection to engage with advanced materials.

Furthermore, as organizations recognize the advantages of upskilling their employees, many are selecting subscription platforms as a more cost-effective alternative to traditional training methods. With group subscriptions, businesses can provide ongoing training to their workforce, ensuring that employees continually develop their skills. This investment not only enhances employee job satisfaction but also increases retention rates, creating a more skilled and stable workforce.

As a result, the wider availability of talent leads to a more robust economy, fostering innovation and productivity across sectors from startups to established corporations. Skilled Ruby developers can help organizations optimize their web applications, improve performance, and drive significant value in projects, benefitting the economy as a whole.

## Political Perspective

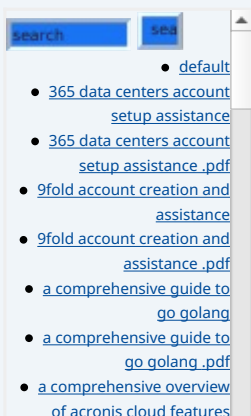
On a political level, subscription learning platforms align with governmental goals aimed at enhancing workforce readiness. In many countries, authorities aim to combat unemployment and underemployment by promoting skills training in tech-related fields. Platforms specializing in Ruby education can play a pivotal role in these initiatives by broadening opportunities for citizens and supporting national training programs.

Moreover, digital literacy has become a cornerstone in various political agendas, particularly in the context of economic resilience and social equity. By encouraging partnerships with these platforms, governments can facilitate greater access to crucial programming skills, particularly for marginalized communities. Such collaboration can contribute to a more inclusive job market, ensuring that everyone has the chance to engage meaningfully with technology.

## Social Perspective

Socially, subscription learning platforms foster an inclusive digital learning environment where individuals from diverse backgrounds can connect and share knowledge. Through community features, such as forums, group projects, and coding challenges, learners can collaborate and build relationships in a supportive atmosphere. This interactivity encourages not only knowledge transfer but also the development of social skills and professional networks that can propel careers forward.

Moreover, the impact of mentorship in these platforms cannot be understated. Many subscription models connect users with industry professionals who can provide guidance, feedback, and anecdotal advice based on their real-world experiences in the tech industry. Such mentorship fosters a sense of community and belonging, which is especially crucial for underrepresented groups in tech, including women and people of color.



## Environmental Perspective

From an environmental standpoint, the transition to online education through subscription platforms contributes to sustainability efforts. Traditional brick-and-mortar schools or training venues often require substantial physical resources like paper, utilities, and transportation that can impose a heavy environmental footprint. In contrast, digital platforms eliminate the need for physical materials and commuting, thus supporting eco-friendly learning practices. This digital shift aligns with global initiatives focused on reducing carbon emissions and promoting ecological sustainability.

By utilizing digitized learning tools, educational organizations can minimize waste and invest in renewable energy sources to power their operations, all while providing valuable coding education. This not only benefits the environment but also reflects a broader commitment to social responsibility within educational frameworks.

## Legal Perspective

Legally, subscription learning platforms must navigate a complex landscape of copyright, licensing, and data protection regulations to protect both themselves and their users. The intellectual property rights of educational content must be carefully managed to prevent violations while ensuring educators and contributors are fairly compensated for their work. Platforms must have mechanisms to verify the originality of their content and adhere to licensing agreements, particularly for materials sourced from third parties.

Moreover, adherence to data protection laws is crucial for maintaining trust and user privacy. With increasing scrutiny on how organizations handle personal information, platforms must implement robust security measures to protect user data from breaches, ensuring compliance with laws such as the General Data Protection Regulation (GDPR) in Europe. This commitment to legal integrity elevates user confidence in the platform, fostering a safe learning environment.

## Technological Perspective

Technologically, subscription learning platforms harness the power of advanced tools and features that enhance learning experiences. For example, artificial intelligence can offer personalized learning pathways by assessing user performance and recommending materials that address individual weaknesses. This data-driven approach allows learners to progress at their own pace and focus on areas where they need improvement.

Interactive coding environments are another key feature that enriches learning. These platforms often provide real-time coding compilers where users can write Ruby code, receive instant feedback, and collaborate with peers on projects. Additionally, many platforms incorporate gamification elements such as coding challenges and achievement badges that keep learners engaged and motivated to reach their goals.

The integration of video conferencing tools enables live coding workshops and mentor sessions, fostering communication and interaction among participants. This technology not only enhances the overall learning experience but also shields users from the isolation often experienced during online education.

## Psychological Perspective

Psychologically, subscription platforms promote a growth-oriented mentality among learners. This is particularly essential in programming disciplines where

- [a comprehensive overview of acronis cloud features .pdf](#)
  - [a10 cloud account verification comprehensive setup and verification guide](#)
    - [a10 cloud account verification comprehensive setup and verification guide .pdf](#)
  - [a10 networks comprehensive overview and impact analysis](#)
    - [a10 networks comprehensive overview and impact analysis .pdf](#)
- [a2 hosting a comprehensive overview of web hosting solutions](#)
- [a2 hosting a comprehensive overview of web hosting solutions .pdf](#)
  - [a2 hosting account verification services our main company](#)
    - [a2 hosting account verification services our main company .pdf](#)
  - [a2 hosting performance evaluations understanding efficiency and metrics](#)
  - [a2 hosting performance evaluations understanding efficiency and metrics .pdf](#)
    - [access control](#)
      - [access control .pdf](#)
- [acronis account setup and approval services](#)
- [acronis account setup and approval services .pdf](#)
  - [acronis cloud security assessments ensuring robust cloud security](#)
    - [acronis cloud security assessments ensuring robust cloud security .pdf](#)
- [acronis migration assistance moving to acronis backup solutions](#)
- [acronis migration assistance moving to acronis backup solutions .pdf](#)
  - [add on configuration assistance on heroku](#)
    - [add on configuration assistance on heroku .pdf](#)
  - [ai and machine learning service integration guiding businesses with tencent cloud](#)
    - [ai and machine learning service integration guiding businesses with tencent cloud .pdf](#)
  - [alibaba cloud account creation assistance](#)
    - [alibaba cloud account creation assistance .pdf](#)
  - [alibaba cloud account creation services](#)
    - [alibaba cloud account creation services .pdf](#)
      - [alibaba cloud revolutionizing e-commerce and business solutions](#)
        - [alibaba cloud revolutionizing e-commerce and business solutions .pdf](#)
    - [alibaba cloud security configurations best practices for secure deployments](#)
      - [alibaba cloud security configurations best practices for secure deployments .pdf](#)
  - [alibaba cloud training and certifications](#)
    - [alibaba cloud training and certifications .pdf](#)
- [alibaba cloud transforming e-commerce through cloud computing](#)

- [alibaba cloud transforming e-commerce through cloud computing .pdf](#)
- [alternative programming languages their role and importance](#)
- [alternative programming languages their role and importance .pdf](#)
  - [amazon s3 bucket configurations setup and security policies](#)
  - [amazon s3 bucket configurations setup and security policies .pdf](#)
  - [an in depth analysis of amazon web services aws](#)

continual practice and problem-solving are keys to success. The psychological benefit of having access to diverse resources fosters a supportive learning atmosphere that encourages experimentation and risk-taking in coding practices.

The flexibility offered by subscription models can significantly reduce anxiety associated with traditional educational settings, allowing learners to explore without the pressure of strict deadlines. This sense of autonomy leads to increased motivation, as students are empowered to tailor their learning experiences based on personal interests and schedules. Furthermore, the community aspect provides social reinforcement, which is highly beneficial for emotional well-being, especially in fields that often require collaborative efforts.

## Business Perspective

From a business standpoint, the rise of subscription learning platforms corresponds with the growing demand for skilled Ruby developers across various sectors, from startup environments to large enterprises. Organizations face a critical skills gap; thus, they are increasingly seeking out innovative solutions to bridge that gap. Subscription learning platforms provide a strategic approach to talent development that can enhance productivity and foster a culture of continuous learning within organizations.

Additionally, these platforms offer compelling return-on-investment (ROI) opportunities for businesses that prioritize workforce development. By enabling employees to upgrade their skills through structured programming courses, companies can reap the benefits of having a more proficient workforce capable of tackling complex technological challenges. Subscription models further facilitate case studies and team competitions where employees can collaborate, work together, and innovate, leading to higher morale and strengthened team dynamics.



## Delving into Ruby Programming through Subscription Learning Platforms

When focusing on Ruby programming, subscription learning platforms emerge as crucial instruments aiding the journey for both novice and experienced developers. These platforms typically feature a structured curriculum designed to accommodate various levels of experience:

- **Interactive Learning Environments:** Many platforms provide hands-on coding environments where learners can write, debug, and execute Ruby code in a real-time integrated development environment (IDE). This immediate application reinforces theoretical concepts and enables learners to see the results of their learning instantly, fostering deeper understanding.
- **Diverse Course Offerings:** In order to cater to a broad spectrum of learners, platforms typically offer comprehensive courses ranging from beginner tutorials covering Ruby fundamentals to advanced classes that delve into complex concepts like metaprogramming and concurrency. These materials ensure that individuals at varying skill levels can find resources tailored to their needs.
- **Community Support:** Subscription learning platforms usually host vibrant community forums or discussion boards where users can seek help, share

- [Legal Terms](#)
- [Main Site](#)

• Why buying here:

1. Outstanding Pros ready to help.
2. Pay Crypto for Fiat-only Brands.
3. Access Top Tools avoiding Sanctions.
4. You can buy in total privacy
5. We manage all legalities for you.

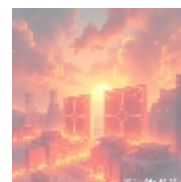
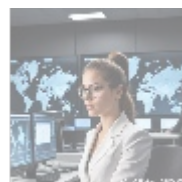
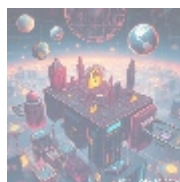
their experience, and collaborate with peers. This support network enables users to overcome challenges and fosters a sense of belonging within the Ruby programming community.

- **Regularly Updated Content:** Given Rubys evolving landscape, platforms take pride in their ability to keep their curriculums fresh and relevant by continuously updating content. Subscribers benefit from new courses that cover the latest Ruby frameworks and libraries, such as Ruby on Rails, ensuring that learners remain aligned with industry standards and practices.
- **Certification and Recognition:** Many subscription platforms provide learners with certificates or digital badges upon course completion, which are valuable credentials when applying for jobs. These recognized achievements can enhance a learner's resume and provide them with a competitive edge when entering the job market.

In addition, many subscription learning platforms feature capstone projectsreal-world assignments that challenge learners to apply their acquired skills to solve practical problems. These projects not only demonstrate proficiency but also help learners build impressive portfolios that can attract potential employers.

The flexibility of the subscription model is particularly advantageous for self-motivated learners. Unlike traditional education settings, learners can pace their studies according to their schedules and needs, thus developing the skills necessary for their desired career paths without the confines of a rigid academic calendar.

Organizations looking to enhance their teams capabilities can find immense value in subscription platforms, as they can provide tailored corporate training solutions to meet specific business goals, aligning skill development with the latest industry trends. Customizable training programs ensure that employees gain the most relevant knowledge, ultimately leading to higher job performance and better business outcomes.



## Conclusion: The Promising Future of Ruby Education through Subscription Platforms

In conclusion, the influence of subscription learning platforms on Ruby education is profound and multifaceted. These platforms are indispensable for fostering flexible, inclusive, and high-quality learning experiences that adapt to the individual needs of each learner. By democratizing access to programming education, they empower individuals to pursue lifelong learning and adaptabilitycritical skills in an ever-evolving tech landscape.

The role of these platforms is likely to expand as the demand for skilled Ruby developers continues to rise. They not only enhance individual skill sets but also contribute significantly to workforce development, ensuring that businesses across varied sectors have access to well-trained professionals capable of meeting the challenges of modernized work environments.

In this dynamic context, subscription learning platforms stand as harbingers of change in the education sector, influencing everything from curriculum design to community engagement, and setting a precedent for future learning methodologies. The ongoing evolution in software development means that these

platforms will continue to adapt and innovate, further solidifying their place as essential tools for aspiring developers around the world.

## Enhance Your Skills with Subscription Learning Platforms

If you're ready to embark on a journey to master Ruby programming and access a wealth of resources tailored for lifelong learning, we invite you to explore our offerings at **telco.ws** . Our competitively priced subscription packages start at just **\$799** , ensuring you receive extraordinary value for high-quality learning experiences. Please proceed to our [Checkout Gateway](#) and follow the instructions for payment. After completing your subscription, don't hesitate to connect with us via email, phone, or our website with your payment receipt and details to embark on your Ruby learning journey. Thank you for considering us as your trusted partner in education!

© [2025+ Telco.Ws](#) . All rights reserved.

