



Custom Domain Configuration: Setting Up Your Unique Identity on Netlify



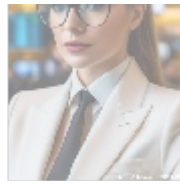
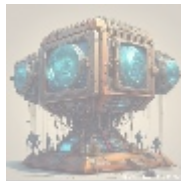
Understanding Custom Domains and Their Importance

Custom domain configuration is the process of linking a unique, personalized web address like **www.yourwebsite.com** to your website hosted on platforms such as Netlify. This configuration goes beyond simply creating a digital address; it plays a critical role in establishing your brand's online identity. In today's digital landscape, characterized by cutthroat competition and fleeting user attention, having a memorable and easily recognizable domain name is essential. This unique identifier helps differentiate your business from others, creating a lasting impression on your audience.

A custom domain serves multiple vital purposes. It enhances user trust, improves search engine optimization (SEO) rankings, and enables a cohesive brand image across various platforms. Users are naturally inclined to interact with well-maintained, professional sites with personalized domain names rather than those using generic, less credible addresses. This preference underscores the significant impact a well-chosen custom domain can have on a company's performance metrics, often leading to greater customer engagement, retention, and ultimately, revenue.

Furthermore, owning a custom domain empowers businesses to have full control over their online identity and presence. It allows for the flexibility of creating custom email addresses (for example, info@yourwebsite.com), effectively reinforcing branding even in communications. This aspect becomes crucial for customer communication and outreach, driving home a sense of professionalism and reliability that generic domains typically lack.

Moreover, a custom domain allows you to create a unified brand presence across various online channels, from social media profiles to business cards. Having this cohesive branding strategy improves recall and recognition, making it easier for current and potential customers to find and remember you.



Perspectives on Custom Domain Configuration

Gaining a comprehensive understanding of custom domain configuration is enriched by examining it through various lenses. Each perspective offers unique insights into why investing in a custom domain is not just beneficial but essential in today's digital ecosystem.

Economic Perspective

From an economic standpoint, investing in a custom domain can yield significant returns on investment (ROI). The trust established through a personalized web address leads to increased website traffic and, potentially, higher sales figures especially for e-commerce businesses. For instance, several studies indicate that businesses utilizing custom domains frequently experience conversion rates approximately 30% higher than those using generic domains. This difference can translate directly into increased sales, customer loyalty, and repeat business.

Moreover, a custom domain reduces the risk of losing brand equity, an essential factor for startups and emerging enterprises. When consumers see a consistent and professional domain name across all platforms, they are more likely to develop a sense of loyalty and trust toward your brand. This sense of commitment can lead potential customers to choose your service over a competitor's, boosting your market presence and profitability.

Social Perspective

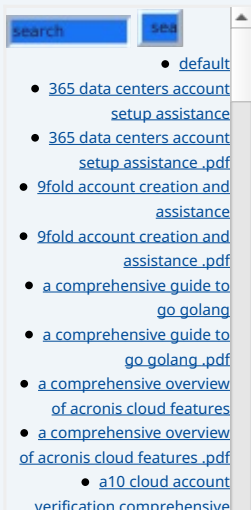
Socially, the importance of a custom domain cannot be overstated. A unique web address fosters a sense of community and belonging among users. It acts as a social signal, communicating professionalism and trustworthiness. In the age of social media, where visibility and reputation are paramount, a memorable domain can significantly enhance a brand's social capital. By creating tailored marketing campaigns that utilize your custom domain, you can effectively resonate with specific demographics, thus driving traffic and engagement.

For example, businesses with a strong social media presence often link back to their unique domains, creating a sense of continuity and reinforcing their brand identity. This integration not only helps retain customers but also attracts new ones, as satisfied customers are more likely to share their positive experiences. This customer service and community aspect can ultimately lead to increased word-of-mouth referrals, which are invaluable in building brand awareness.

Legal Perspective

Legally, owning a custom domain ensures clear ownership rights and helps safeguard against potential disputes. When you register a domain properly, you establish your intellectual property rights, protecting your brand identity from being misappropriated by competitors. This is particularly important in a digital landscape teeming with competitors; having your unique domain can prevent others from capitalizing on your name or brand identity, which could result in significant confusion among potential customers and a detrimental impact on your business.

Registering your domain also allows you to take legal action against anyone



attempting to infringe on your intellectual property. Having a recognized brand and domain can strengthen your legal position should disputes arise.

Furthermore, it can create barriers for competitors looking to outright copy your brand strategies.

Technological Perspective

From a technological standpoint, platforms like Netlify provide seamless integration for custom domains, enhancing user experience and security through advanced features such as automated SSL certificate provision, which encrypts data flowing to and from your site. Security features are not merely optional; they are a requirement in the age of data breaches and privacy concerns. These technologies improve not only the security of users personal information but also contribute positively to your site's SEO rankings.

Further, Netlify offers continuous deployment capabilities, ensuring that updates can be pushed live without a hitch, thus keeping the user experience smooth and uninterrupted. This capability is essential for businesses that need to adapt quickly to changing market conditions or consumer preferences. With a well-configured custom domain on a platform like Netlify, you can rely on automated workflows to ensure your website remains relevant and up-to-date without requiring extensive manual intervention.

Business Perspective

From a business perspective, establishing a custom domain forms a pivotal component of any online marketing strategy. It provides a central hub for your companys digital presence and allows for cohesive branding across various marketing systems, from social media to email campaigns. Effective domain management can also include tracking performance metrics, optimizing marketing strategies, and enhancing overall user experience.

For example, businesses can utilize analytics tools to gain insights into user behavior, tracking how visitors interact with their custom domain, what content or products draw the most attention, and where customers initially encounter their brand. The insights gained from these analytics help understand your audience better, refine your marketing messages, and ultimately drive growth and customer satisfaction.

This level of control over your business presence will help you identify opportunities for growth and expansion, ensuring that your company adapts to changing market conditions and consumer behaviors. Your custom domain becomes not just a web address but a foundational aspect of your business strategy.



The Core Topic: Custom Domain Configuration on Netlify

Setting up a custom domain on Netlify is an important step that can greatly enhance your brand visibility and professional appearance. The process is user-friendly and designed to facilitate a seamless transition from a generic domain to your unique domain name. Netlify stands out as a preferred platform due to its

- [setup and verification guide](#)
- [a10 cloud account verification comprehensive setup and verification guide .pdf](#)
- [a10 networks comprehensive overview and impact analysis](#)
- [a10 networks comprehensive overview and impact analysis .pdf](#)
- [a2 hosting a comprehensive overview of web hosting solutions](#)
- [a2 hosting a comprehensive overview of web hosting solutions .pdf](#)
- [a2 hosting account verification services our main company](#)
- [a2 hosting account verification services our main company .pdf](#)
- [a2 hosting performance evaluations understanding efficiency and metrics](#)
- [a2 hosting performance evaluations understanding efficiency and metrics .pdf](#)
- [access control](#)
- [access control .pdf](#)
- [acronis account setup and approval services](#)
- [acronis account setup and approval services .pdf](#)
- [acronis cloud security assessments ensuring robust cloud security](#)
- [acronis cloud security assessments ensuring robust cloud security .pdf](#)
- [acronis migration assistance moving to acronis backup solutions](#)
- [acronis migration assistance moving to acronis backup solutions .pdf](#)
- [add on configuration assistance on heroku](#)
- [add on configuration assistance on heroku .pdf](#)
- [ai and machine learning service integration guiding businesses with tencent cloud](#)
- [ai and machine learning service integration guiding businesses with tencent cloud .pdf](#)
- [alibaba cloud account creation assistance](#)
- [alibaba cloud account creation assistance .pdf](#)
- [alibaba cloud account creation services](#)
- [alibaba cloud account creation services .pdf](#)
- [alibaba cloud revolutionizing e-commerce and business solutions](#)
- [alibaba cloud revolutionizing e-commerce and business solutions .pdf](#)
- [alibaba cloud security configurations best practices for secure deployments](#)
- [alibaba cloud security configurations best practices for secure deployments .pdf](#)
- [alibaba cloud training and certifications](#)
- [alibaba cloud training and certifications .pdf](#)
- [alibaba cloud transforming e-commerce through cloud computing](#)
- [alibaba cloud transforming e-commerce through cloud computing .pdf](#)
- [alternative programming](#)

[languages their role and importance](#)

- [alternative programming languages their role and importance .pdf](#)
 - [amazon s3 bucket configurations setup and security policies](#)
 - [amazon s3 bucket configurations setup and](#)

simplicity and the powerful features it offers for domain management and configuration.

Understanding the Basics

To begin, your custom domain will act as the digital address for your website, allowing users to find and identify you easily in the vast online marketplace. After registering your domain with a reputable domain registrar (such as GoDaddy, Namecheap, or Google Domains), the next step involves configuring it to work with Netlify. This usually entails a few key steps:

- **Linking Your Domain:** In your Netlify dashboard, there is an option to add your custom domain under "Domain settings." This intuitive interface will guide you through the necessary configuration details, ensuring your domain is correctly linked to your hosted site. Users will benefit from clear guidelines and instructional support provided by the platform, making it accessible even for those with limited technical knowledge.
- **Configuring DNS Records:** Following the linking process, you'll be required to update your domain's DNS settings. This typically involves setting up CNAME and A records based on the specific instructions provided by Netlify. The changes will direct all incoming traffic to your Netlify-hosted site. Proper DNS configurations are crucial, as they affect how users locate your website. It can also influence email communication if you decide to set up business emails associated with your custom domain.
- **Enabling SSL:** Security is a top priority when managing a website. Netlify provides free SSL certificates, which you can easily activate during the configuration process. SSL certificates encrypt information transferred between the user's browser and your server, protecting sensitive data and enhancing trust. Activating this feature is crucial for protecting user data and improving your site's SEO ranking, as search engines favor secure sites in their rankings.

Advantages of Using Custom Domains

Choosing to set up a custom domain with Netlify offers numerous advantages:

- **Professional Appearance:** A custom domain dramatically increases the professionalism of your web presence, establishing your brand in the minds of potential clients and consumers. This perception can be based purely on the appearance of your website.
- **Brand Identity:** With a custom domain, you can present a consistent brand image across all customer touchpoints, reinforcing your business identity and making it easier for customers to remember you. This cohesiveness builds brand equity over time.
- **Improved SEO:** Custom domains are favored by search engines, thereby helping to improve your visibility and rankings in search engine results pages (SERPs). The more visible you are, the more likely consumers are to discover your services and engage with your business.
- **Enhanced User Trust:** Customers are more inclined to engage with a recognizable and credible domain. This can lead to better conversion rates and deeper relationships with your audience as they feel secure conducting their activities on your platform. The trust factor can significantly influence user decisions when making purchases or sharing personal information.
- **Expansion Opportunities:** Having a custom domain can open new avenues for marketing campaigns and ventures. With a distinct web address, businesses can more effectively engage with partners, affiliates, and other businesses, fostering collaborations that can lead to growth.

- [Legal Terms](#)
- [Main Site](#)

- Why buying here:

1. Outstanding Pros ready to help.
2. Pay Crypto for Fiat-only Brands.
3. Access Top Tools avoiding Sanctions.
4. You can buy in total privacy
5. We manage all legalities for you.

Technology and Solutions

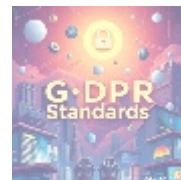
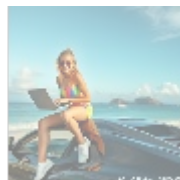
Netlify's infrastructure not only simplifies domain management but also offers cutting-edge technology, including continuous deployment and integration capabilities. Developers can seamlessly push site updates without the fear of downtime, ensuring that users always have access to the most current information and offerings. Such efficiency is crucial in today's fast-paced digital environment.

As a result, developers can focus on creating rather than maintaining. With a well-configured custom domain on a platform like Netlify, you can rely on automated workflows to ensure your website remains relevant and up-to-date without requiring extensive manual intervention. This allows you to allocate resources to other aspects of your business, such as marketing and customer service, thereby increasing overall productivity.

Case Study Example

Consider an e-commerce business that initially operated under a generic domain. Upon transitioning to a custom domain hosted on Netlify, they observed a marked improvement in customer engagement and sales figures. The business experienced a 30% increase in traffic and a 25% rise in conversion rates within just three months of implementing this strategy. This case highlights the significant impact that custom domains can have on user behavior and overall business performance.

Furthermore, after receiving positive feedback about their branding strategy, the business owner noted improvements in customer trust and loyalty. Customers more frequently returned for repeat purchases, and the business also experienced an increase in social media engagement as happy customers shared their experiences with others. This feedback loop generated even more site traffic and word-of-mouth marketing opportunities.



Conclusion

In the modern digital landscape, configuring a custom domain is not merely an optional endeavor; it is a fundamental requirement for any serious business aiming to establish a meaningful online presence. By leveraging custom domain configuration on platforms like Netlify, organizations can significantly enhance their credibility, improve user experience, and drive increased traffic to their websites. The strategic benefits of this practice are profound, as they align with the overarching goals of any business: boosting visibility, maximizing engagement, and ultimately, increasing revenue.

With each passing day, the online marketplace becomes more competitive. As such, early adoption of effective strategies, like establishing a custom domain, can set your business apart and create a trajectory for growth and success. Your custom domain is not just a URL; it's a cornerstone of your digital identity and a vital component of your business strategy.

Interested in Our Custom Domain Configuration Service?

If you're ready to take the next step toward establishing your online identity, our specialized service for helping you set up custom domains on Netlify is available for \$750. To proceed, please visit our [Checkout Gateway](#) and follow the instructions for payment. After you've made your payment, feel free to get in touch with us via email, phone, or our online form, sharing your payment receipt and domain details so we can assist you promptly. Thank you for considering us for your custom domain needs!

© [2025+ telco.ws](#). All rights reserved.

