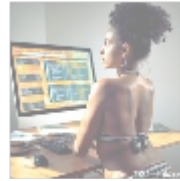




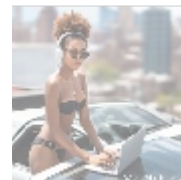
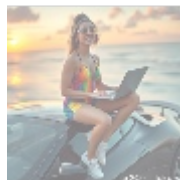
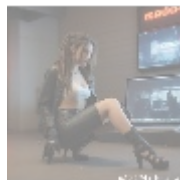
Cloud Architectures Consulting: Harnessing the Power of OVHcloud



Overview of Cloud Architectures Consulting

Cloud architectures consulting is an essential service designed to assist organizations in evaluating, strategizing, and implementing effective cloud solutions that optimize data management, enhance application performance, and improve overall IT infrastructure efficiency. With the continuous shift toward cloud-based platforms, businesses are increasingly recognizing the myriad advantages a well-structured cloud architecture can deliver. From increased operational flexibility to cost reductions and resilience, cloud consulting can transform an organization's approach to technology.

The foundation of cloud architecture encompasses various components, including physical data centers, virtualization technology, networking resources, and application services that work seamlessly to create a robust digital environment. Each of these elements must be carefully integrated to provide a cohesive and secure architecture that supports business operations. In addition, organizations must consider issues such as cloud service models (IaaS, PaaS, SaaS) and deployment models (public, private, hybrid) when formulating their cloud strategies. Understanding these aspects is critical for businesses looking to maximize their cloud investments.



Importance of Cloud Architectures Consulting from Various Perspectives

When evaluating cloud architectures consulting, it is vital to consider its impact through multiple lenses that encompass economic, political, social, environmental, legal, historical, technological, psychological, and business factors. Each of these perspectives provides invaluable insight into how cloud solutions can be successfully implemented and utilized.

Economic Impact

From an economic perspective, effective cloud architectures have the potential to significantly reduce operational costs and increase overall efficiency. By migrating to cloud solutions, businesses can eliminate the expenses associated with maintaining extensive physical infrastructure, including servers, data centers, and networking hardware. This transition can lead to dramatic reductions in capital expenditures (CapEx) and operational expenditures (OpEx) alike. OVHcloud, with its cost-effective pricing model, allows businesses to pay only for the resources they actively use, leading to more effective budgeting and spending accuracy.

Moreover, deploying an optimized cloud architecture can increase resource utilization, adaptively scaling resources up or down based on demand. This dynamic allocation aids in minimizing wastage, allowing organizations to focus on growth and innovation rather than on unproductive overhead. Businesses that fail to optimize their cloud setups may find themselves facing unnecessary costs, which can lead to tighter margins and reduced competitiveness in an increasingly challenging market.

Political Context

In today's global environment, the political landscape heavily influences how organizations approach cloud solutions. Governments worldwide are enacting regulations and legislation regarding data privacy, security, and sovereignty, creating a complex environment for operations. Specific jurisdictions impose laws that require businesses to store or process data within geographical boundaries or adhere to strict data protection standards. This often necessitates a deliberate focus on compliance in cloud architectures.

Consulting services must be equipped to navigate these regulations, ensuring that organizations deploy cloud architectures that not only fulfill their operational needs but also conform to political requirements. This proactive approach helps businesses avoid potential legal pitfalls and penalties that non-compliance could incur, preserving both reputation and operational continuity.

Social Considerations

On a societal level, transitioning to cloud solutions has profound implications for collaboration, communication, and workforce dynamics. A well-designed cloud architecture fosters an environment that allows for seamless collaboration among teams, regardless of physical location. Given the rise of remote and hybrid working models, businesses that invest in cloud architectures enable their employees to access applications and critical data from virtually anywhere, enhancing productivity, morale, and team cohesion.

This flexibility can engage a more diverse workforce and improve job satisfaction, as employees are granted autonomy over where and how they operate. Additionally, cloud solutions can promote inclusivity, accommodating various demographics and workstyles, such as flexible hours, supporting family commitments, or enabling individuals with disabilities to participate fully in organizational activities.

Environmental Impact

The cloud computing revolution also carries significant environmental implications. Well-architected cloud systems can lead to substantial reductions in energy consumption and greenhouse gas emissions by consolidating data center operations and optimizing resource management. By moving away from traditional on-premises infrastructures and utilizing OVHcloud's eco-friendly data

centers, organizations can significantly lower their carbon footprint.

Moreover, many cloud providers, including OVHcloud, emphasize sustainability in their operations, ensuring that businesses striving for ecological responsibility can find partners that align with their values. Utilizing cloud architecture not only allows companies to enhance their operational efficiencies but also enables them to convey their commitment to environmental stewardship to customers and stakeholders alike.

Legal Frameworks

The legal landscape surrounding cloud computing is varied and can be quite intricate, encompassing numerous regulations that organizations must consider. Laws related to data privacy, intellectual property, and contractual obligations greatly influence how cloud architectures are designed and managed. Industries such as healthcare, finance, and government operate under stringent compliance frameworks that dictate how data is stored and processed.

Cloud consulting services provide crucial insight into these legal requirements, helping organizations build compliant architectures that minimize risks. This involves robust security measures, such as end-to-end encryption and regular audits, to protect sensitive information from data breaches or cyber threats. Ensuring compliance with applicable laws not only maintains legal standing but also builds trust and credibility with users, fostering confidence in the business's operational practices.

Historical Perspective

Exploring cloud architectures from a historical perspective reveals an evolution from traditional, on-premises solutions to cloud-based models that have transformed organizational operations across industries. Over the past two decades, the increasing adoption of cloud technologies has reshaped how businesses manage data and applications, emphasizing flexibility, scalability, and innovation.

With a historical lens, consulting firms equipped with industry intelligence can help organizations avoid the mistakes of the past while leveraging insights to create effective strategies for modern cloud deployments. By analyzing trends, such as the rise of containerization and serverless architecture, consultants can guide companies to adopt solutions that not only meet their current needs but also prepare them for future advancements in technology.

Technological Evolution

The rapid pace of technological advancement in cloud computing necessitates that organizations continually adapt their strategies and infrastructures. Technologies such as artificial intelligence (AI), machine learning (ML), and automation tools are becoming increasingly embedded within cloud offerings, bringing forth new capabilities for organizations. OVHcloud regularly develops and integrates new services that enhance computing power, storage capabilities, and security posture.

Cloud architects and consulting services must stay abreast of these advancements, ensuring that businesses incorporate state-of-the-art technologies into their cloud infrastructures for maximum benefit. This includes facilitating the adoption of innovative tools that can improve processes, optimize workflows, and deliver data-driven insights that propel organizational decision-making. Evaluating these evolving technologies is essential for remaining competitive and securing a leadership position in the market.

- [365 data centers account setup assistance](#)
- [365 data centers account setup assistance .pdf](#)
- [9fold account creation and assistance](#)
- [9fold account creation and assistance .pdf](#)
- [a comprehensive guide to go golang](#)
- [a comprehensive guide to go golang .pdf](#)
- [a comprehensive overview of acronis cloud features](#)
- [a comprehensive overview of acronis cloud features .pdf](#)
 - [a10 cloud account verification comprehensive setup and verification guide](#)
 - [a10 cloud account verification comprehensive setup and verification guide .pdf](#)
 - [a10 networks comprehensive overview and impact analysis](#)
 - [a10 networks comprehensive overview and impact analysis .pdf](#)
- [a2 hosting a comprehensive overview of web hosting solutions](#)
- [a2 hosting a comprehensive overview of web hosting solutions .pdf](#)
 - [a2 hosting account verification services our main company](#)
 - [a2 hosting account verification services our main company .pdf](#)
- [a2 hosting performance evaluations understanding efficiency and metrics](#)
- [a2 hosting performance evaluations understanding efficiency and metrics .pdf](#)
 - [access control](#)
 - [access control .pdf](#)
- [acronis account setup and approval services](#)
- [acronis account setup and approval services .pdf](#)
 - [acronis cloud security assessments ensuring robust cloud security](#)
 - [acronis cloud security assessments ensuring robust cloud security .pdf](#)
- [acronis migration assistance moving to acronis backup solutions](#)
- [acronis migration assistance moving to acronis backup solutions .pdf](#)
 - [add on configuration assistance on heroku](#)
 - [add on configuration assistance on heroku .pdf](#)
 - [ai and machine learning service integration guiding businesses with tencent cloud](#)
 - [ai and machine learning service integration guiding businesses with tencent cloud .pdf](#)
 - [alibaba cloud account creation assistance](#)
 - [alibaba cloud account creation assistance .pdf](#)
 - [alibaba cloud account creation services](#)
 - [alibaba cloud account creation services .pdf](#)
 - [alibaba cloud revolutionizing e commerce and business solutions](#)
 - [alibaba cloud revolutionizing e commerce](#)

- and business solutions .pdf
- alibaba cloud security configurations best practices for secure deployments
- alibaba cloud security configurations best practices for secure deployments .pdf
- alibaba cloud training and certifications
- alibaba cloud training and certifications .pdf
- alibaba cloud transforming e commerce through cloud computing
- alibaba cloud transforming e commerce through cloud computing .pdf
- alternative programming languages their role and importance
- alternative programming languages their role and importance .pdf
- amazon s3 bucket configurations setup and security policies
- amazon s3 bucket configurations setup and security policies .pdf
- an in depth analysis of amazon web services aws
- an in depth analysis of amazon web services aws .pdf
- api and authentication setup on google cloud platform
- api and authentication setup on google cloud platform .pdf
- api development on scaleway

Psychological Elements

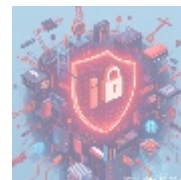
The transition to a cloud-centric operational model can often evoke a degree of anxiety and concern among employees accustomed to traditional systems. Often, staff may feel uncertain about their roles and the security of their information in the cloud environment. This sense of apprehension may be compounded by misconceptions about the cloud, including fears over data breaches and job displacement due to automation.

Consulting services play a vital role in addressing these psychological factors by providing comprehensive training, change management strategies, and communication channels that foster trust and understanding. By promoting a culture of openness and involving staff in the transition process, organizations can better equip their teams to embrace cloud technologies, resulting in smoother implementation and higher acceptance rates.

Business Implications

From a business standpoint, leveraging tailored cloud architectures can yield substantial competitive advantages. Businesses that make informed architectural decisions are better equipped to streamline operations, improve customer experiences, and adapt to changing market conditions. Engaging in robust consulting services allows organizations to gain critical insights that inform their strategic vision and optimize their cloud investment.

Furthermore, choosing the right cloud architecture can enhance innovation as companies gain access to scalable resources that enable rapid experimentation and deployment of new ideas. As a result, organizations can respond more swiftly to customer feedback and market demands, leading to increased market share and customer loyalty. Cloud consulting services assist in identifying the optimal solutions that align with both immediate business goals and long-term aspirations.



Core Topic: Designing Effective Cloud Architectures

Designing effective cloud architectures involves multiple stages of consideration, technical configurations, and strategic collaboration. Central to this crafting process is the decision to utilize OVHcloud's extensive suite of products and services, which facilitate the creation of architectures addressing specific business challenges. The primary objective is to construct adaptable and scalable infrastructures that respond not only to current operational demands but also to future growth trajectories.

Technical Specifications

When embarking on the journey of cloud architecture design, organizations must conduct comprehensive assessments of their needs, evaluating various factors, including workload types, compliance requirements, and performance expectations. OVHcloud offers a wide range of services that cater to diverse organizational needs:

- **Virtual Machines (VMs):** OVHclouds VMs are customizable, allowing organizations to specify CPU, memory, and storage needs according to operational requirements. The ability to scale these resources up or down as

- Why buying here:

1. Outstanding Pros ready to help.
2. Pay Crypto for Fiat-only Brands.
3. Access Top Tools avoiding Sanctions.
4. You can buy in total privacy
5. We manage all legalities for you.

business needs change promotes significant flexibility and cost efficiencies.

- **Object Storage Solutions:** OVHcloud's object storage services can handle large volumes of unstructured data, providing organizations with the capabilities to scale their storage requirements smoothly. This flexibility is crucial for businesses managing vast amounts of big data, ensuring high object availability and durability.
- **Kubernetes (K8s):** With the growing popularity of containerized applications, OVHcloud's Kubernetes service allows organizations to efficiently orchestrate and manage containers at scale. This orchestration tool enhances deployment speed, simplifies management practices, and improves reliability, making it particularly beneficial for businesses transitioning to microservices architectures.
- **Dedicated Servers:** For businesses that require high performance for compute-intensive applications or for those with strict compliance obligations, OVHcloud provides dedicated servers that offer greater resource control. This solution ensures that critical data remains protected and performant.
- **Cloud Database Services:** OVHcloud's managed databases simplify the process of database deployment, scaling, and management, ultimately enabling organizations to focus on their applications rather than the underlying infrastructure.

Challenges and Solutions

As organizations embark on designing cloud architectures, several common challenges often arise:

- **Integration Difficulties:** Organizations may experience difficulties when integrating existing systems with new cloud architectures. Cloud consultants are well-versed in best practices and integration tools that streamline this process, minimizing disruptions to ongoing operations. This ensures a smoother transition from on-premises to cloud environments.
- **Security Risks:** Data security often emerges as a primary concern, especially given the frequency of cyberattacks and data breaches. Consulting services offer invaluable insights into comprehensive security measures, including identity access management (IAM), multi-factor authentication, encryption techniques, and regular security audits, which identify and resolve vulnerabilities proactively.
- **Complex Cost Management:** Without proper oversight, organizations may find cloud expenditures escalating rapidly. Consulting services recommend cost optimization strategies, including usage analysis, implementation of automatic scaling, and usage of financial monitoring tools that contribute to controlling and forecasting expenditures effectively.
- **Performance Bottlenecks:** Potential bottlenecks in performance can arise from inefficient architectures or poorly chosen configurations. Consulting firms conduct performance assessments and offer insights on optimizing resource distributions to enhance application responsiveness and availability.

Advantages of Consulting Services

Engaging cloud architecture consulting services provides numerous advantages that enhance the overall implementation process:

- **Expertise and Experience:** Consulting services bring a wealth of knowledge regarding industry trends, best practices, and effective technical architectures. Their specialized insight helps organizations design optimal cloud solutions tailored to their specific needs, moving beyond generic templates.

- **Customized Strategies:** By carefully understanding individual client needs and business goals, consultants can create bespoke architectures that maximize functionality and operational efficiency while ensuring alignment with broader business strategies.
- **Risk Mitigation:** Identifying potential risks during the architecture design phase serves as a preventive measure that can save organizations from incurring potentially costly issues down the line. Consultants conduct thorough assessments, streamline workflows, and implement redundancies to minimize risk exposure.
- **Future-Proofing Architectures:** With a focus on anticipating technological advancements, consulting services help organizations build architectures that remain adaptable over time, readily able to integrate new technologies and updates as they become available. This adaptability is crucial for maintaining long-term competitiveness.

Conclusion: The Path Forward

In conclusion, the value of engaging cloud architectures consulting particularly when leveraging OVHcloud services is indispensable for businesses seeking to thrive in an increasingly digital landscape. As technology evolves rapidly, adopting an effective cloud strategy becomes paramount. A cloud architecture that integrates best practices ensures increased operational efficiency and scalability, driving overall business success.

Investing in specialized consulting services not only enhances operational capabilities but also positions organizations to remain competitive and adaptable to ongoing shifts in the market and technology. By harnessing expert knowledge and leveraging comprehensive cloud solutions, organizations set themselves on a path to successful digital transformation that is sustainable and aligned with their future aspirations.

Unlock the Potential of Your Cloud Architecture Today!

If you are interested in exploring how cloud architectures consulting can transform your business, feel free to reach out to us at www.telco.ws via email, phone, or our online form. In case you are convinced about moving forward, our specialized cloud consulting service is available for \$750. Please proceed to our [Checkout Gateway](#) and use our Payment Processor to complete the purchase of \$750. After your payment is confirmed, contact us with your receipt and details to arrange your cloud architecture consulting service. Thank you for considering us for your cloud solutions!

© 2025+ [telco.ws](http://www.telco.ws). All rights reserved.

