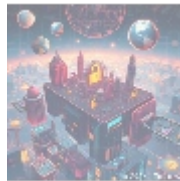




A2 Hosting Performance Evaluations: Analyzing Efficiency and Performance Metrics for Hosted Applications



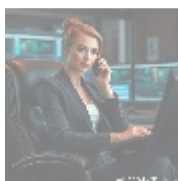
Understanding A2 Hosting Performance Evaluations

A2 Hosting has garnered considerable acclaim for its commitment to delivering high-performing web hosting services in a competitive landscape. Performance evaluations measure the efficiency of web hosting solutions by examining a wide range of metrics critical to the success of websites and web applications. These evaluations are paramount for online businesses, as inefficiencies can lead to lost revenues and decreased customer satisfaction.

Performance metrics studied include:

- **Uptime:** The reliability of hosting services in terms of availability.
- **Load Speed:** The time it takes for web pages to fully render in the user's browser.
- **Server Response Time:** Measurement of how quickly a server responds to user requests.
- **User Experience:** Feedback and engagement levels from end-users interacting with a website.

These metrics not only affect user satisfaction but also influence search engine rankings, conversion rates, and overall operational success. Understanding and continually evaluating these performance metrics is crucial, as they directly impact a business's online presence and ability to achieve its goals in a digital-first economy.

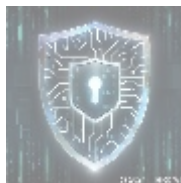
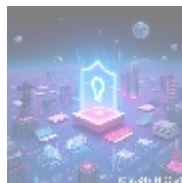


The Importance of Performance Metrics

Performance metrics function as essential indicators of a web hosting service's reliability, capacity, and effectiveness. Its impact resonates across various aspects of digital business operations, underscoring their importance:

- **Uptime:** Uptime reflects the percentage of time a hosting service is accessible. A high uptime rate is essential for e-commerce websites and other online platforms, as even minor downtimes can lead to substantial financial losses and erosion of customer trust.
- **Load Speed:** Modern consumers expect immediate access to content. Studies show that if a website takes longer than three seconds to load, nearly 40% of users will abandon it. Thus, faster load speeds enhance not only user experience but also retention rates.
- **Server Response Time:** This metric provides insight into how quickly servers can process user requests. A lower response time promotes a more seamless experience, encouraging users to spend more time exploring a website, ultimately leading to higher conversion rates.
- **Content Delivery Network (CDN):** Utilizing a CDN ensures that content loads quickly regardless of a user's geographical location. This is especially crucial for businesses with global audiences, as it minimizes latency and optimizes loading times.
- **Resource Scalability:** The hosting service's ability to allocate resources proportionally to traffic demands ensures reliability during peak periods. Scalability also equips businesses with a flexible framework to accommodate growth without compromising performance.
- **Monitoring Tools:** Effective performance monitoring tools can provide real-time analytics and alerts about performance issues. These insights empower businesses to swiftly identify and respond to problems before they escalate.

In summary, performance metrics are foundational to a successful digital strategy, guiding businesses in optimizing their web infrastructure and ensuring customer satisfaction. As the digital marketplace continues to evolve, focusing on these metrics will be key to maintaining a competitive edge.



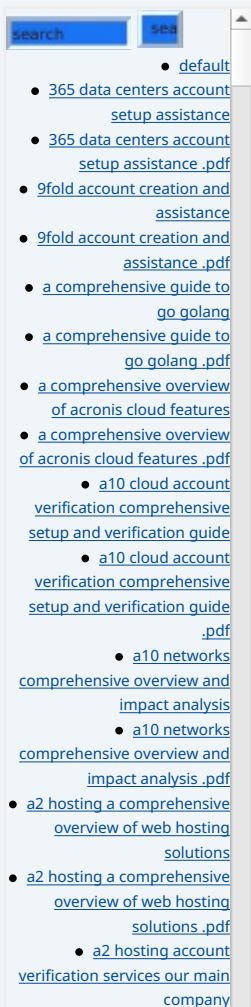
A Comprehensive Analysis of A2 Hosting Performance

Analyzing A2 Hosting's performance requires exploring a range of perspectives since its implications affect businesses on various levels. Each perspective presents an opportunity to delve deeper into the functional success of A2 Hosting's performance metrics:

Economic Perspective

From an economic point of view, performance metrics significantly influence a company's bottom line. Let's examine some key economic considerations:

- **Return on Investment (ROI):** A reliable and efficient hosting service like A2 Hosting may lead to higher ROI by ensuring minimal downtime and maximizing user engagement.
- **Reduced Costs:** Effective resource management leads to lower operational costs. Companies can invest savings into other growth-driving areas like marketing and product development.
- **Increased Sales:** Fast load times and reliable uptime directly correlate with increased conversion rates. Customers are more likely to complete transactions on a site that does not present delays.



- **Market Competitiveness:** A solid uptime and speedy service can help companies outperform competitors, thus capturing more market share.

Technological Perspective

A2 Hosting continues to utilize cutting-edge technology to elevate its performance metrics. Key technological components include:

- **SSD Storage:** By integrating SSD (Solid State Drive) technology, A2 Hosting significantly enhances speed in data retrieval and processing, improving load times compared to traditional hard drives.
- **HTTP/2 Support:** The adoption of HTTP/2 allows for multiplexing of requests, reducing latency and leading to faster load times and smoother user interactions.
- **Advanced Caching Mechanisms:** Caching optimizes resource usage and loading times by storing frequently accessed data closer to users, allowing for quicker retrieval.
- **Turbo Servers:** A2 Hostings Turbo Server offering provides up to 20 times faster loading speeds, making it a valuable option for businesses with high traffic needs.
- **Security Features:** Enhanced security measures, including automated backups and malware scanning, ensure minimal risks to website downtime due to security breaches.

Historical Perspective

Examining A2 Hostings historical evolution reveals how past decisions shape current offerings:

- **Adaptation to Trends:** A2 Hosting has navigated market shifts such as the growing emphasis on cloud computing by integrating flexible, scalable cloud solutions that maintain high performance.
- **Continuous Improvement:** Over the years, A2 Hosting has maintained an unwavering focus on enhancing its services based on feedback and evolving technological standards. This adaptability positions it strongly in today's competitive landscape.
- **Long-Standing Reputation:** With years of experience in the industry, A2 Hosting has built a reputation for reliability and quality, attracting both new customers and retaining existing ones.

Social Perspective

The social implications of hosting performance encompass user psychology and behavior:

- **User Expectations:** Users today expect rapid responses; delays can lead to negative perceptions of a brand. High performance can directly influence customer loyalty and brand reputation.
- **Customer Engagement:** Engaging users effectively requires an online platform that responds in real-time. Slow websites deter interaction and productivity.
- **Current Trends:** The increasing shift toward mobile accessibility necessitates that websites hosted by A2 must be optimized for mobile devices, as a significant portion of users now navigates via smartphones.

Legal and Compliance Perspective

In today's regulatory landscape, compliance with laws surrounding data protection is paramount:

• [a2 hosting account verification services our main company .pdf](#)

• [a2 hosting performance evaluations understanding efficiency and metrics](#)

• [a2 hosting performance evaluations understanding efficiency and metrics .pdf](#)

- [access control](#)
- [access control .pdf](#)

• [acronis account setup and approval services](#)

• [acronis account setup and approval services .pdf](#)

- [acronis cloud security assessments ensuring robust cloud security](#)
- [acronis cloud security assessments ensuring robust cloud security .pdf](#)

• [acronis migration assistance moving to acronis backup solutions](#)

• [acronis migration assistance moving to acronis backup solutions .pdf](#)

- [add on configuration assistance on heroku](#)
- [add on configuration assistance on heroku .pdf](#)
- [ai and machine learning service integration guiding businesses with tencent cloud](#)
- [ai and machine learning service integration guiding businesses with tencent cloud .pdf](#)
- [alibaba cloud account creation assistance](#)
- [alibaba cloud account creation assistance .pdf](#)
- [alibaba cloud account creation services](#)
- [alibaba cloud account creation services .pdf](#)
- [alibaba cloud revolutionizing e commerce and business solutions](#)
- [alibaba cloud revolutionizing e commerce and business solutions .pdf](#)
- [alibaba cloud security configurations best practices for secure deployments](#)
- [alibaba cloud security configurations best practices for secure deployments .pdf](#)
- [alibaba cloud training and certifications](#)
- [alibaba cloud training and certifications .pdf](#)
- [alibaba cloud transforming](#)

- [Legal Terms](#)
- [Main Site](#)

- Why buying here:

1. Outstanding Pros ready to help.
2. Pay Crypto for Fiat-only Brands.
3. Access Top Tools avoiding Sanctions.
4. You can buy in total privacy
5. We manage all legalities for you.

- **Data Protection Regulations:** A2 Hosting is committed to complying with regulations like the GDPR, which governs how businesses handle user data, thereby safeguarding user rights.
- **Website Security:** A significant aspect of compliance includes ensuring websites are secure against breaches, which could lead to legal liabilities.
- **Transparency:** Users expect transparent communication about data handling practices. A2 Hosting's focus on compliance helps maintain user trust and mitigates risk.

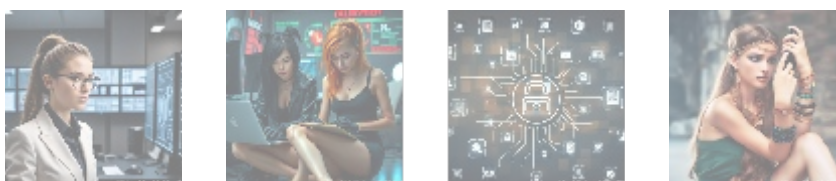


Evaluating A2 Hosting's Performance Metrics: What Qualifies as Success?

To gain a comprehensive understanding of A2 Hosting's impact, evaluating key performance indicators (KPIs) is essential:

- **Uptime Guarantee:** A2 Hosting guarantees 99.9% uptime. This level of assurance reflects their commitment to providing a reliable platform, reducing the likelihood of unexpected downtimes disrupting business operations.
- **Speed Tests:** Independent speed tests demonstrate that A2 Hosting consistently ranks as one of the fastest hosting providers, especially with their Turbo Boost plans, making them particularly attractive for businesses with significant traffic.
- **Customer Support:** Access to 24/7 customer support ensures timely assistance for any performance-related issues. Client satisfaction often hinges on the availability of responsive support services, which A2 Hosting offers through multiple channels.
- **Performance Monitoring Solutions:** A2 Hosting offers built-in performance monitoring that allows businesses to track key site metrics in real-time. This feature helps companies proactively address potential issues before they impact users.
- **Customer Feedback:** Continuous gathering of customer feedback and assessments ensures A2 Hosting is responsive to user needs, driving improvements that enhance their service offerings further.

Each of these performance indicators reinforces A2 Hosting's dedication to maintaining high standards while helping businesses optimize their online presence. By aligning their services with specific performance metrics, A2 Hosting effectively enhances user satisfaction and operational capabilities.



Conclusion: The Way Forward with A2 Hosting Performance Evaluations

In conclusion, performance evaluations for A2 Hosting present a broad spectrum of metrics that collectively drive both reliability and success for hosted

applications. Analyzing these evaluations from an array of perspectives economic, technological, historical, social, and legal offers invaluable insights that help potential customers make informed decisions. Investing in a reputable hosting provider is not merely a transaction; it is a strategic move that empowers businesses to thrive in an increasingly competitive digital landscape.

A2 Hosting has established itself as a valuable resource for companies aiming to enhance their online applications through reliable performance metrics, strong support structures, and advanced technology solutions. Companies that carefully consider these evaluations will likely find that a partnership with A2 Hosting not only meets but exceeds their expectations, propelling them toward their business goals in today's dynamic market.

Unlock Superior Performance for Your Business!

If you are interested in elevating your website's efficiency and performance, our specialized **A2 Hosting Performance Evaluation Service** is priced at **\$750** . For additional information or to arrange a tailored evaluation session, please contact us at www.telco.ws . If you are ready to proceed with your purchase, please visit our [Checkout Gateway](#) to securely process your payment of **\$750** . Once your payment is confirmed, reach out to us via email, phone, or our website with your receipt and details to arrange your A2 Hosting Performance Evaluation Service. Thank you for considering our services; we look forward to partnering with you for success!

© 2025+ telco.ws . All rights reserved.

